

28 April 2015 | Edition #6

Canterbury Regional News

Kia ora,

It is hard to believe it's already Term 2, I hope some of you managed to enjoy some time to relax. During the term break the Minister of Education visited for the regional cross-sector forum. At the forum Cantabrians from across the education system shared information and advice on the education work programme which supports the Minister of Education's 2015 priorities.

The Minister also took the opportunity to visit one of the schools in the Christchurch Schools Rebuild (CSR) Programme to mark the beginning of construction at the new Marshland School. Thank you to all involved in making this a success.

Work continues with Investing in Educational Success and the Minister announced the second tranche of Communities of Schools last week. I'm looking forward to our schools being able to access the increased resources and support available to them to work together to support gains for student's achievement.

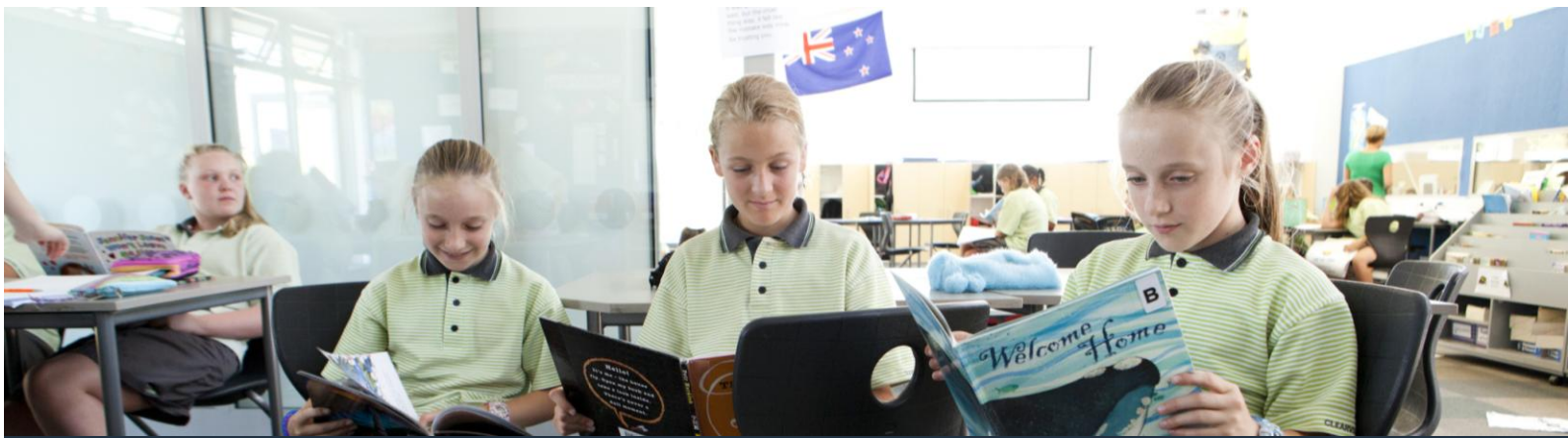
Delivering a programme to support collaborative and modern learning practices Canterbury wide is a key part of the education network to make sure the significant capital investment into refurbishing, remodelling, rebuilding and renewing our school properties is realised. Information will be available for you shortly about this programme which is intended to position us as a future leader in teaching and learning practice.

We continue to look for ways to better support you so please do not hesitate to contact us as we encourage feedback with your views on improvements. We would appreciate if you could print this newsletter and place it in your staff room.

Ma te wa,

Coralanne Child

Director of Education for Canterbury



Creating an education network that inspires children to reach their full potential.

Transformation of Practice

The Ministry has been working to create a programme to support collaborative and modern learning practices in Christchurch schools. The purpose of this is to assist schools to create a modern curriculum that meets the needs of students.

To ensure the programme supports your teaching and learning practice and our students to learn in modern, flexible and digitally-connected classrooms this will be a school led transformation programme. This will be available to all schools in Canterbury, not just those in the Christchurch School Rebuild Programme and as every school is in a different place it will be custom made to meet your needs.

We will be in contact to discuss the support you require and more information will be coming soon. If you have any questions please contact Simon.blatchford@minedu.govt.nz

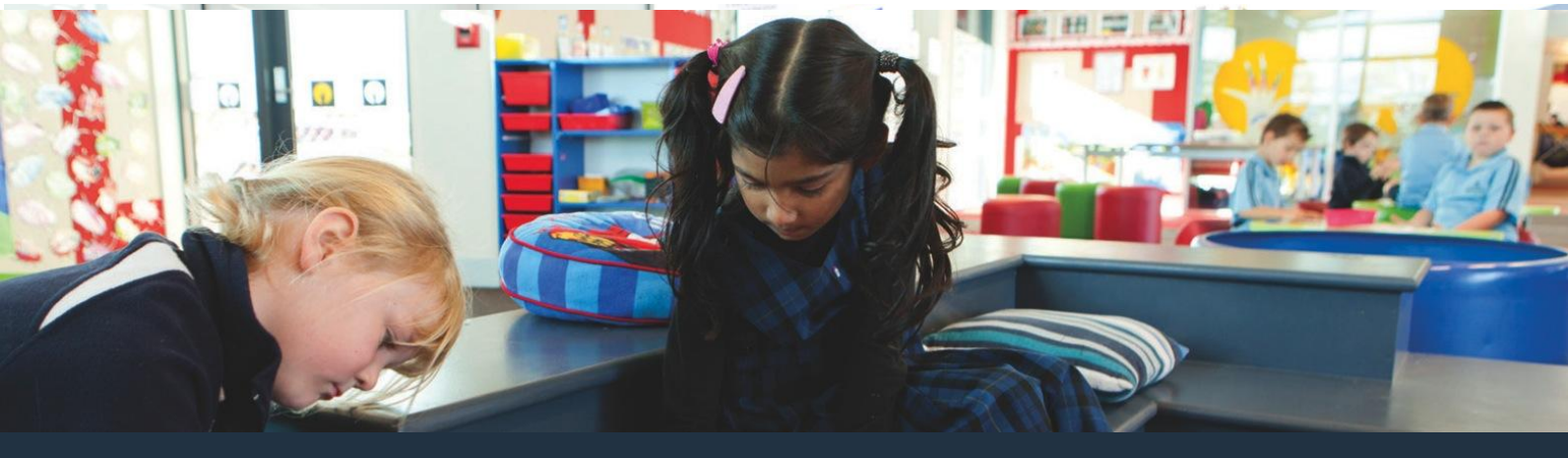
Consultation period for Redcliffs School Extended

The Minister of Education Hekia Parata has extended the consultation period for Redcliffs School. Submissions will now close on July 1, 2015. The Minister granted an extension after a request from the school. The purpose of this period of consultation is to hear the views of the board, parents and community before a decision is made. The Ministry of Education is funding a facilitator for the Board of Trustees to assist the community through the consultation process.

South Canterbury Liaison Meetings

The Term 2 South Canterbury liaison meeting with the Ministry of Education and other invited agencies is on 02 June, 1:00pm at Waimataitai School where a wide range of relevant topics will be discussed. Term 3 date - September 2 at 1:00 pm, with the venue yet to be confirmed. Send any potential agenda items to christopher.meakin@minedu.govt.nz or rachel.hawthorne@minedu.govt.nz

If you wish to attend please contact your sector representative: Early Childcare: dave@scfka.org.nz, Primary: carmel@stjoetim.school.nz or Secondary: jpackman@waimate-high.school.nz



Building a new and better future for education and for the community.

Progress and Consistency Tool (PaCT)

PaCT is a tool that supports teachers as they make judgments about students' progress and achievement in relation to the New Zealand Curriculum National Standards. The PaCT helps to give teachers, school leaders, school boards, parents, and whānau confidence that Overall Teacher Judgments are dependable and consistent.

If you are interested in learning more or using the PaCT: [click here](#). The website has an introductory clip and also contains interactive training modules, information packs and support material.

Overall Teacher Judgment (OTJ) workshops

Upcoming OTJ workshops series for English medium schools: These workshops are facilitated through [The Consortium of Professional Learning](#) and will continue to build the assessment capability of teachers in English medium schools following the success of the 2014 series. The overall aim is to further support teachers to strengthen their capability to make valid and reliable OTJ about learner progress and achievement, in relation to the curriculum National Standards.

To ensure this support is available to as many schools as possible, registrations will be limited to two participants per school. Workshops will be held on the following dates in Canterbury and further information and registration details will be available from 17 April on the [CPL website](#).

Location	Series 1 Date	Facilitation Team
Rangiora	21 May	Steve Edwards Joy Hawke
Christchurch	11 June	Garry Taylor Joy Hawke
Ashburton	23 June	Garry Taylor Joy Hawke
Timaru	16 June	Garry Taylor Joy Hawke