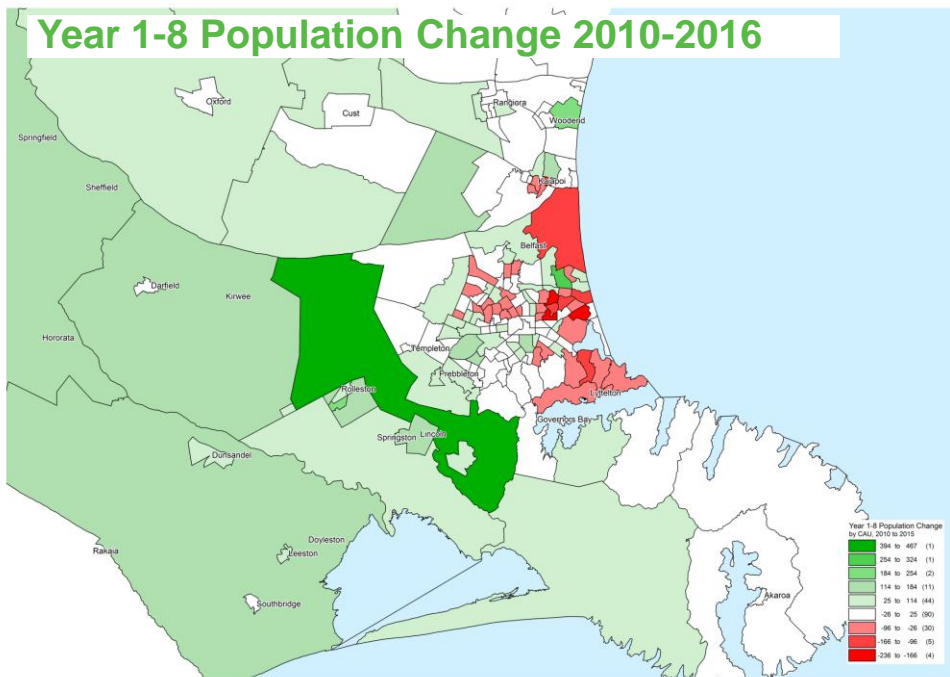
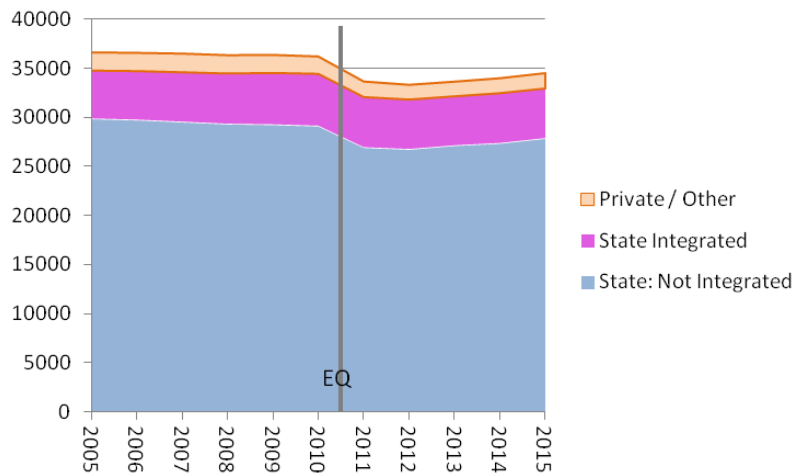


Primary and intermediate roll trends



Population change is measured from the March 2010 and March 2016 school roll returns. Year 1-8 students only

Y1-8 Provision by School Authority



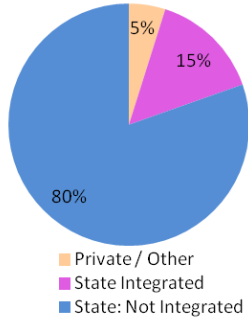
education.govt.nz

Historical July Rolls for schools in Christchurch City – this includes Designated Character schools
Sourced from Education Counts

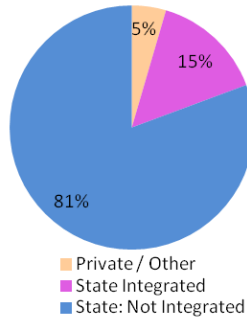
% Provision by School Authority



Chch City Percentage of Year 1-8 students attending schools of each Authority - 2010



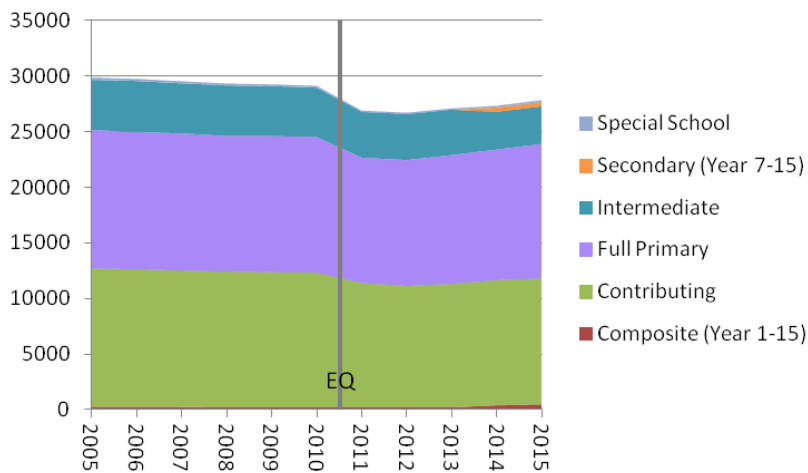
Chch City Percentage of Year 1-8 students attending schools of each Authority - 2015



education.govt.nz

Historical July Rolls for schools in Christchurch City – this includes Designated Character schools
Sourced from Education Counts

Y1-8 State Provision by School Type



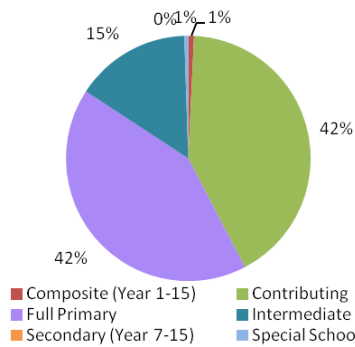
education.govt.nz

Historical July Rolls for schools in Christchurch City – this includes Designated Character schools
Sourced from Education Counts

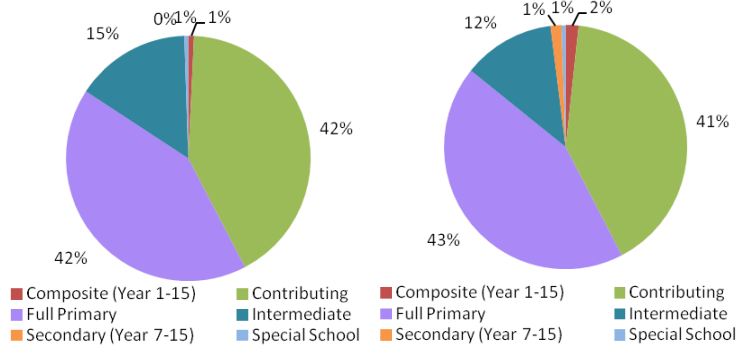
Y1-8 State Provision by School Type - Percentage



Percentage of Christchurch City Y1-8 State School Roll by School Type - 2010



Percentage of Christchurch City Y1-8 State School Roll by School Type - 2015



education.govt.nz

Historical July Rolls for schools in Christchurch City – this includes Designated Character schools Sourced from Education Counts

Y1-8 State Provision by School Type



	2008	2009	2010	2011	2012	2013	2014	2015
Composite (Year 1-15)	220	224	216	203	206	206	390	476
Contributing	12,196	12,144	12,107	11,193	10,923	11,116	11,256	11,325
Full Primary	12,188	12,232	12,190	11,268	11,316	11,576	11,746	12,091
Intermediate	4,545	4,495	4,443	4,122	4,138	4,089	3,407	3,400
Secondary (Year 7-15)							410	402
Special School	167	154	153	131	151	129	139	153
Grand Total	29,316	29,249	29,109	26,917	26,734	27,116	27,348	27,847

education.govt.nz

Historical July Rolls for schools in Christchurch City – this includes Designated Character schools Sourced from Education Counts

Y1-8 State Provision by School Type - Percentages

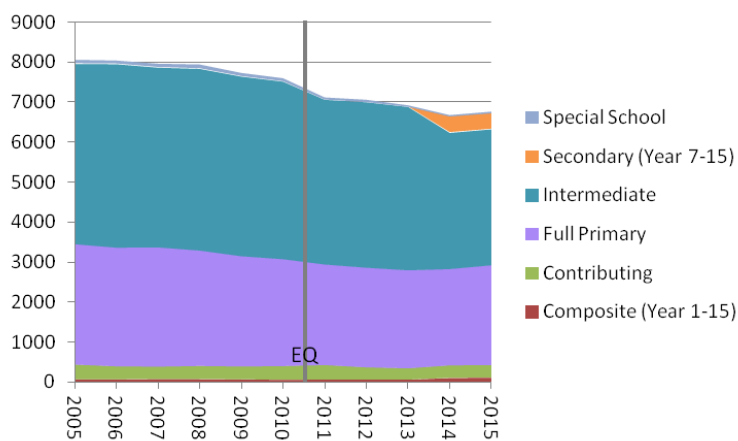


	2008	2009	2010	2011	2012	2013	2014	2015
Composite (Year 1-15)	1%	1%	1%	1%	1%	1%	1%	2%
Contributing	42%	42%	42%	42%	41%	41%	41%	41%
Full Primary	42%	42%	42%	42%	42%	43%	43%	43%
Intermediate	16%	15%	15%	15%	15%	15%	12%	12%
Secondary (Year 7-15)	0%	0%	0%	0%	0%	0%	1%	1%
Special School	1%	1%	1%	0%	1%	0%	1%	1%

education.govt.nz

Historical July Rolls for schools in Christchurch City – this includes Designated Character schools
Sourced from Education Counts

Y7-8 State Provision by School Type



education.govt.nz

Historical July Rolls for schools in Christchurch City – this includes Designated Character schools
Sourced from Education Counts

Y7-8 State Provision by School Type



	2008	2009	2010	2011	2012	2013	2014	2015
Composite (Year 1-15)	72	64	54	60	62	57	102	113
Contributing	342	337	357	377	317	297	326	325
Full Primary	2,884	2,754	2,670	2,512	2,490	2,449	2,406	2,491
Intermediate	4,545	4,495	4,443	4,122	4,138	4,089	3,407	3,400
Secondary (Year 7-15)							410	402
Special School	92	77	72	52	59	38	37	43
Grand Total	7,935	7,727	7,596	7,123	7,066	6,930	6,688	6,774

education.govt.nz

Historical July Rolls for schools in Christchurch City – this includes Designated Character schools
Sourced from Education Counts

Y7-8 State Provision by School Type - Percentages



	2008	2009	2010	2011	2012	2013	2014	2015
Composite (Year 1-15)	1%	1%	1%	1%	1%	1%	2%	2%
Contributing	4%	4%	5%	5%	4%	4%	5%	5%
Full Primary	36%	36%	35%	35%	35%	35%	36%	37%
Intermediate	57%	58%	58%	58%	59%	59%	51%	50%
Secondary (Year 7-15)	0%	0%	0%	0%	0%	0%	6%	6%
Special School	1%	1%	1%	1%	1%	1%	1%	1%

education.govt.nz

Historical July Rolls for schools in Christchurch City – this includes Designated Character schools
Sourced from Education Counts