



Canterbury Behaviour and Support Service

In Canterbury the behaviour service and support team is now working as one team of specialists to provide support to schools, students and their whānau. The Behaviour Service and support is available to students in years 1 to 10. Our main focus is to provide timely, high quality specialist support.



Special Education Regional Manager – Southern | Murray Roberts

P: 03 378 7363 | M: 027 443 2214 | E: Murray.Roberts@education.govt.nz



District Manager | Lukas Swart

P: 03 378 7730 | M: 027 296 1682 | E: Lukas.Swart@education.govt.nz



Manager Positive Behaviour for Learning Southern | Bruce Cull

P: 03 378 7529 | M: 027 294 6785 | E: Bruce.Cull@education.govt.nz

Special Education – Service Managers



Service Manager – Behaviour Team | Fiona Bartley

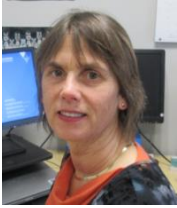
P: 03 378 7536 | M: 027 296 1688 | E: Fiona.Bartley@education.govt.nz



Service Manager - City East/South Team | Juanita Davidson

P: 03 378 7701 | M: 027 703 6290 | E: Juanita.Davidson@education.govt.nz

Special Education – Service Managers



Service Manager - South Canterbury Team | Atholea Shanks

P: 03 687 2823 | M: 021 242 3550 | E: Atholea.Shanks@education.govt.nz



Service Manager - North Canterbury Team | Fiona Cook

P: 03 378 7389 | M: 027 518 9538 | E: Fiona.Cook@education.govt.nz



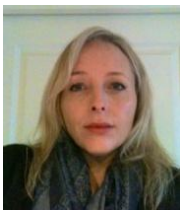
Service Manager - Mid Canterbury Team | Bill Pullar

P: 03 378 7325 | M: 027-223 8144 | E: Bill.Pullar@education.govt.nz



Service Manager – Canterbury Therapists and Advisors Team | Kaye Hyams

P: 03 378 7734 | M: 027 518 9576 | E: Kaye.Hyams@education.govt.nz



Service Manager - Christchurch City North West | Charlie Davey

P: 03 378 7700 | M: 027 296 1684 | E: Charlie.Davey@education.govt.nz