

February 2015 | Edition #2

Canterbury Regional News

Kia ora,

It may only be the beginning of the term but so much great work is already continuing and new projects are well underway. There's been some change to the Ministry's Education Renewal team over the holiday period.

The Operational Delivery Advisor (ODA) roles have ended but we are delighted to retain their services in project lead roles until June 2016. Retaining their experience and knowledge through all they have done with the Learning Communities over the last couple of years is highly advantageous for the programme team's work ahead.

There is more detail on the Education Renewal Team in this newsletter. The programmes priorities for 2014/15 denote a marked shift from the initiation phase of 2013/14, where the focus was on establishing Learning Community Clusters (LCCs), building relationships, agreeing intent and visions for LCCs and supporting the change from an individual school focus to a learning community focus.

We have also recently welcomed three new staff to our Sector Enablement and Support team. They each have a great deal of experience and knowledge to enable them to provide you with a wide range of support.

Since our last newsletter we have had great feedback on the Collaborative Initiative section. We would love to share more cluster projects and the results you are achieving through working together. So please do not hesitate to contact us; we are always happy to hear from you and we would love to share your stories.

Ma te wa,

Coralanne Child

Director of Education for Canterbury



Creating an education network that inspires children to reach their full potential.

Education Renewal Team

The Canterbury Regional structure implemented on 1 July 2014 is eminently suitable to support the transition of the ODA responsibilities to Senior Advisors as the relationship with LCCs moves to a business as usual approach during the year. The team will focus on the remaining critical pieces of work, which includes:

Ruth Jellyman | Project Lead – Aranui Campus/SE Network

- supporting the Aranui Established Board of Trustees to work with the wider Aranui community to develop an exciting vision for the organisation, facilities and services the Aranui campus will provide, and
- implementing agreed proposals for the Special Education network development

Tim Maxwell | Project Lead – Change management

- transitioning the work of ODAS in business as usual operations
- contract management of LCC leaders, approval and apportionment of innovation funding, and facilitation of network events such as the Leader's hui
- supporting the transition of IES and community schools (when appropriate/applicable)

Mark Doyle | Project Lead - Secondary

- supporting the achievement of the Christchurch Secondary vision
- secondary network provision

Simon Blatchford | Project Lead – Transformation

- delivering a teaching practice programme so the investment in quality, modern teaching spaces is realised
- supporting the Pasifika Advisory Board's work on the Pasifika Language Strategy for Greater Christchurch
- working with representatives of Mātauraka Mahaanui – the Waitaha Advisory Board to implement co-constructed projects in 2015

Barbara Madden has returned to her substantive Early Childhood role.

Please feel free to contact the project lead or the Education Renewal Manager garry.williams@minedu.govt.nz



Creating an education network that inspires children to reach their full potential.

Sector Enablement and Support Team

The new members of the Sector Enablement and Support team are:

Karyn Wilson | Senior Curriculum Advisor

Karyn's experience in developmental work within the wider education sector has ranged from involvement in teams which developed the Social Sciences Learning Area part of the New Zealand Curriculum, the writing teams for the exemplification of the Social Sciences curriculum and the development of the first and second versions of the NCEA Social Studies Achievement Standards Matrix. Karyn's project development focus at Lincoln High School included integrating nine discrete Social Science subjects into one and generating pathways for a restructuring of the entire curriculum to meet the future learning needs of students. Karyn also has experience as an academic dean and has been a staff trustee on a BoT engaging primarily in the Finance, Promotional, Master Planning and Discipline committees.

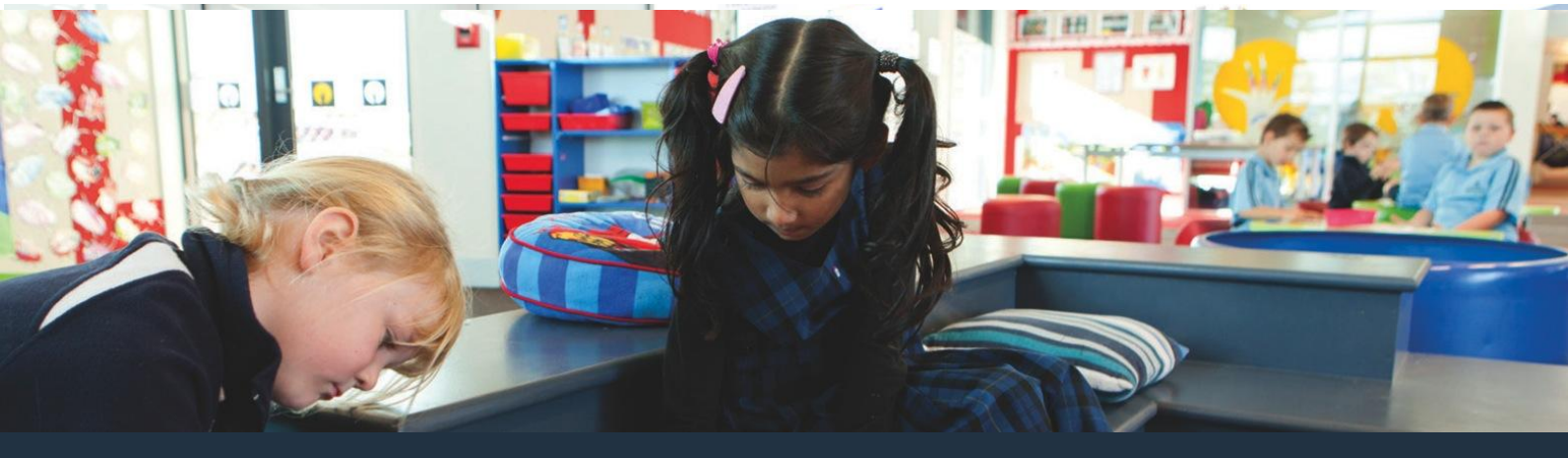
Rachel Hawthorne | Senior Advisor

Rachel's background is in the secondary sector where she has worked as an English teacher, curriculum middle manager and pastoral dean, mainly at Hagley College in Christchurch, but having also had teaching stints in Northland and England. Rachel recently conducted research around youth perceptions and practices of leadership as part of her Masters in Educational Leadership and has experience delivering professional development in the areas of developing cultural responsiveness and future focused education.

Mark Tulia | Pasifika Co-ordinator

Mark has joined the Ministry of Education from Hillmorton High School where he was the Year 7 and 8 Co-Team Leader. Previously to this Mark has held positions at Manning Intermediate and Aranui Primary schools. Mark will be working with the Directors and Managers on the implementation of the Pasifika Education Plan. His strong links to his extended family, culture and language along with his intimate knowledge of Pasifika will allow Mark to support our communities as we strive to raise achievement for our Pasifika learners.

I know they are looking forward to meeting you personally and please don't hesitate to contact them for assistance.



Building a new and better future for education and for the community.

Collaborative initiatives making a difference

Underscoring how far we have come since 2011 are some important projects that are achieving results and being replicated by other clusters.

Digital Technology - Ngà mātāpua o ngà pakihi Cluster held a digital technology festival: Digi Fest. This involved children from each of the schools from the Lincoln cluster attending a two day tech workshop. A focus of this festival was to make learning contextual through the use of digital technologies. The event included a showcase evening where parents came in to view the students work. Feedback from students, parents and teachers was extremely positive and the cluster is looking to run the event again in 2015.

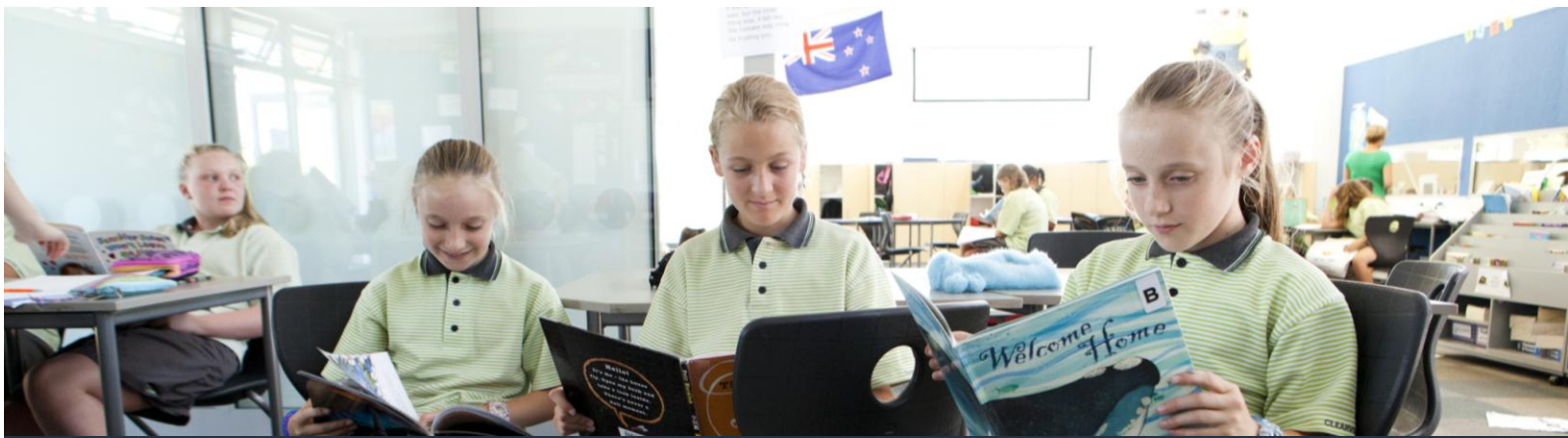
Youth Leadership - Schools in the Hereora cluster have worked alongside each other and identified student leaders that then helped develop a student leadership programme. The youth leaders develop their leadership skills through an initial leadership day and this event has helped them to improve their leadership skills and provided senior students with the opportunity to work with other leaders. The days are planned and led by senior students from Burnside High School utilising the Tukana/Teina concept. Planning for future events both across the cluster and within their specific settings is continuing.

The Burnside High School Leaders: The main focus was about students actively contributing and giving back to their wider community. Burnside High School shared the expertise of their diverse group of leaders (Sporting, Cultural, Digital Technologies, and The Arts) across the other Hereora LCC centers.

Special Needs - The St Albans and Hereora clusters have both set up Special Needs Coordinators (SENCO) groups within their clusters. Each group meet once a term and they provide an effective support and sharing network for special needs teachers and others responsible for children with special needs within our schools and ECEs. This group meets at different locations to help build relationships and networking across the group.

These meetings have proved particularly valuable for SENCO as it is a great opportunity to provide updates on best practice and sharing of expertise, systems, resources and initiatives.

To enable us to share your projects please email: amanda.dowling@minedu.govt.nz



Creating an education network that inspires children to reach their full potential.

Invitation from Gap Filler to Christchurch Schools

Gap Filler will be hosting the inaugural *International FRENCH Cricket World Cup* this summer at the Retro Sports Facility at The Commons. The IFCWC events will coincide with the 'proper' International Cricket World Cup Fanzone operating in Victoria Square.

In keeping with the Earthquake Minister's aspiration that Christchurch could be the sporting capital of New Zealand, we'd like to do our bit towards that loftily goal and invite citizens and visitors alike to participate in one of our favourite childhood pastimes: French Cricket.

While our memories of long summers and endless games of French Cricket may be a little vague, we've re-written the rules so as to avoid any potential 'international controversy' (*a la* the 1981 underarm incident). Teams of two are invited to play in what will, no doubt, go down in sporting history. The tournament runs for three weeks from the 13th of February with *Le Grande Finale* on Sunday the 8th of March. Moustaches *obligatoire*. You will play one or two 15 minute games on the same day each week during the tournament, so you must be able to commit to that for three weeks.

You may think you know the rules of French Cricket, but we've written them anew, so you'd better check them out [HERE](#).

Email bec@gapfiller.org.nz if you have any issues or questions.



The FRENCH Cricket World Cup is played in teams of two. Teams can be comprised of two players under the age of 12, two players 12 and over, or one of each (parent/child). The tournament runs from **Sunday 15 February to Sunday 8 March**. Each team will play 1 or 2 15-minute games on the same day and time each week. The finals are on the 8 March.

If you are keen to participate turn up 30 minutes prior to games | Sunday's 11am - 1pm