

Proposals announced on 13 September 2012

Points to Note

No deletions have been made to this information.

Page	Comments
Proposals Document – title page	Note that these were the proposals made on 13 September and since then options may have changed due to consultation and new information. That not all the clusters in this document were in the Business Case. That no formal proposal has been made for secondary school provision.
Christchurch Secondary Cluster	Note that no proposal has been made for Secondary School Provision as more geotechnical information is required.

Greater Christchurch Education Renewal Plan: Proposals as announced 13 September 2012

Please note:

- This information shows the information provided on 13 September. Since the proposals were announced options may have changed due to the consultation process and new information becoming available.
- Not all clusters included in these proposals were included in the business case. These clusters were not included in the business case because they lie outside the scope of the business case.
- No formal proposal has been made for Secondary School provision. Decisions are subject to further information about the geotechnical state of these schools.

AKAROA Learning Community Cluster

Category - Consolidate

Catalyst for Change: Land / Building / People

Access	Equity	Education and governance	Infrastructure
--------	--------	--------------------------	----------------

Network Summary:

The Akaroa cluster consists of a number of isolated communities. The schools are small but the locations are important to provide access to education.

School by School Information:

School	March 2012 Roll	Out of Zone Learners	Site Size	Investment	Utilisation	ERO Cycle	Unengaged learners	NCEA level 2 Achievement
Akaroa Area	142	0	1.7 ha		92%	3yrs	0	75%
Duvauchelle	26	0	1.5 ha		36%	3yrs	0	n/a
Le Bons Bay	6	0	0.8 ha		26%	3yrs	0	n/a
Little River	85	0	0.9 ha		83%	3yrs	0	n/a
Okains Bay	17	0	1.2 ha		36%	3yrs	0	n/a

Current



Location of State Schools in Indicative Cluster Boundary

Proposal



Location of State Schools in Indicative Cluster Boundary

Access	Equity	Education and governance	Infrastructure
--------	--------	--------------------------	----------------

School	Land & Infrastructure	Entity
Akaroa Area	Composite (Yr1-13)	Repair
Duvauchelle	Composite (Yr1-13)	Repair
Le Bons Bay	Full primary (Yr1-8))	Close
Little River	Full primary (Yr1-8)	Repair
Okains Bay	Composite (Yr1-13)	Repair

Akaroa Area	Composite (Yr1-13)	Repair	Continues - operates as host to neighbouring schools
Duvauchelle	Composite (Yr1-13)	Repair	Close. Establish hub
Le Bons Bay	Full primary (Yr1-8))	Close	Close.
Little River	Full primary (Yr1-8)	Repair	Continues
Okains Bay	Composite (Yr1-13)	Repair	Close. Establish hub

AKAROA SECONDARY Learning Community Cluster

Category - **Consolidate**

Catalyst for Change: Buildings / Land / **People**

Access	Equity	Education and governance	Infrastructure
--------	--------	--------------------------	----------------

Network Summary:

School by School Information:

School	March 2012 Roll	Out of Zone Learners	Site Size	Investment	Utilisation	ERO Cycle	Unengaged learners	NCEA level 2 Achievement
Akaroa Area	142	0	1.8 ha		92%	3	0	75%

Current



Location of State Schools in Indicative Cluster Boundary

Proposal

Access	Equity	Education and governance	Infrastructure
--------	--------	--------------------------	----------------

School	Land & Infrastructure	Entity
Akaroa Area	Composite (Yr1-15)	Repair
		Continues as host school

ARANUI Learning Community Cluster

Category - Rejuvenate

Catalyst for Change: Land / Building / People

Access	Equity	Education and Governance	Infrastructure
--------	--------	--------------------------	----------------

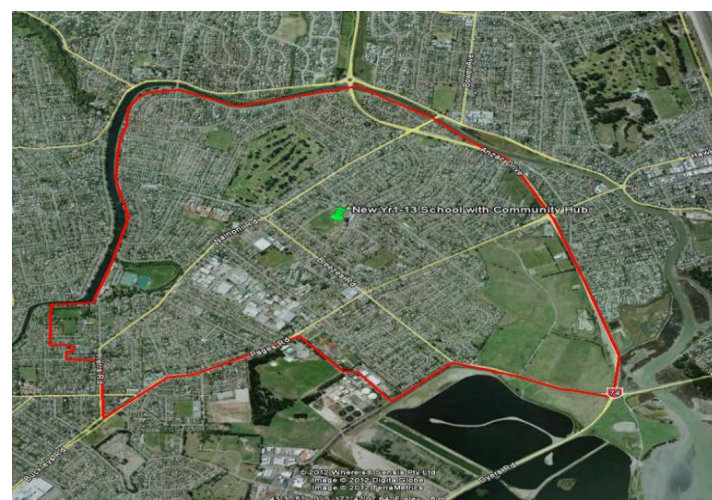
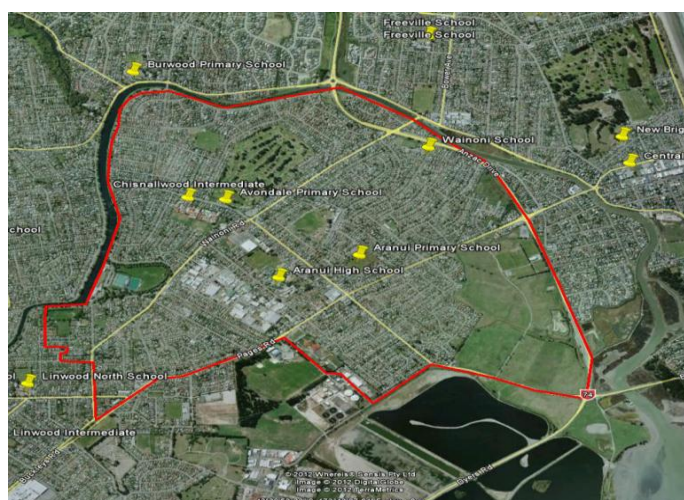
Network Summary: Aranui is a low socio-economic area with decile 1 and 2 schools (excluding Chisnallwood Intermediate). Chisnallwood is located in the Aranui cluster although it largely serves a wider area extending into the Shirley and Parklands clusters.

School by School Information:

School	March 2012 Roll	Out of Zone Learners	Site Size	Investment	Utilisation	ERO Cycle	Unengaged learners	NCEA level 2 Achievement
Aranui High	553	0	8.7 ha		79%	3yrs	50	41%
Aranui Primary	144	0	3.8 ha		102%	3yrs	9	n/a
Avondale	320	0	2.5 ha		75%	2yrs	19	n/a
Chisnallwood	759	482	4 ha		87%	3yrs	14	n/a
Wainoni	83	0	2.5 ha		33%	2yrs	7	n/a

Current

Proposal



Location of State Schools in Indicative Cluster Boundary

Location of State Schools in Indicative Cluster Boundary

Proposal

Access	Equity	Education and Governance	Infrastructure
--------	--------	--------------------------	----------------

School	Land & Infrastructure	Entity
Aranui High	Close site	Establish a new Yr 1-13 campus with ECE provision and community ¹ services and sports and recreation on site
Aranui Primary	Close site	
Avondale	Close site	
Chisnallwood	Close site	
Wainoni	Close site	

Community Services= MSD, Health and other social services

Note:

- Options to minimise transitions between institutions should be considered
- Cluster has been subject to land damage and a number of schools border the 'red zone'.
- Opportunity for wider community services to be situated on site with education provision. Community services include MSD, Health, other social services, library and sport and recreation.
- Refer to Special Education Learning Community Cluster for proposed special school base

AVONHEAD Learning Community Cluster

Category – Restore

Catalyst for Change: Land / **Building** / People

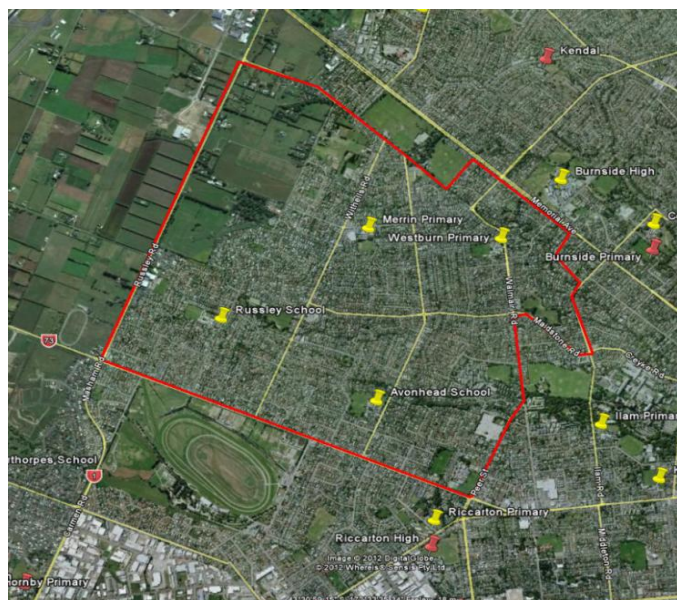
Access	Equity	Education and governance	Infrastructure
--------	--------	--------------------------	----------------

Network Summary: The Avonhead cluster has four schools that are located within 900m to 1.3km of each other, however there is a significant school age population that it services.

School by School Information:

School	March 2012 Roll	Out of Zone Learners	Site Size	Investment	Utilisation	ERO Cycle	Unengaged learners
Avonhead	482	31	2.6 ha		116%	3yrs	3
Merrin	281	32	2.4 ha		70%	2yrs	1
Russley	356	54	2.9 ha		85%	3yrs	0
Westburn	427	146	3 ha		95%	3yrs	0

Current



Location of State Schools in Indicative Cluster Boundary

Note

- Allenvale Special School and Resource Centre has satellite provision at Westburn School.
- Refer to Special Education Learning Community Cluster.

Proposal

Access	Equity	Education and governance	Infrastructure
--------	--------	--------------------------	----------------

School		Land & Infrastructure	Entity
Avonhead	Full primary (Yr1-8)	Repair	Continues
Merrin	Full primary (Yr1-8)	Repair	Continues
Russley	Full primary (Yr1-8)	Repair	Continues
Westburn	Full primary (Yr1-8)	Repair	Continues

BELFAST Learning Community Cluster

Category - Consolidate

Catalyst for Change: Land / Building / People

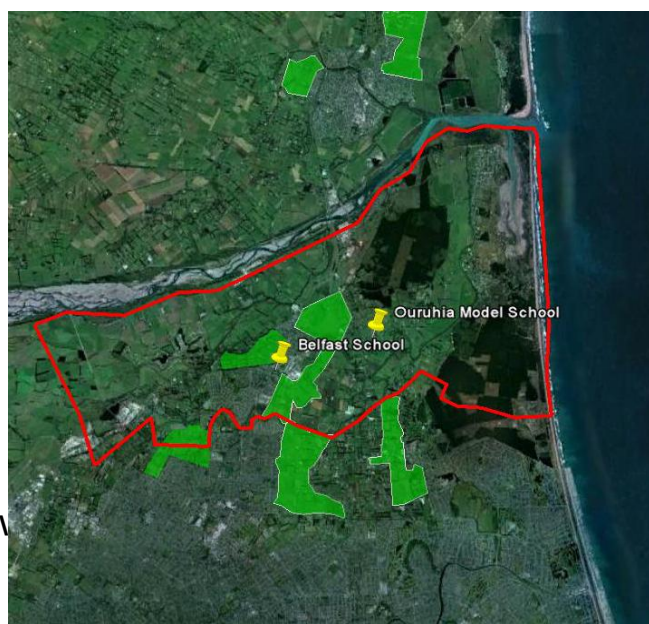
Access	Equity	Education and governance	Infrastructure
--------	--------	--------------------------	----------------

Network Summary: Belfast is an area of projected growth. There are two existing schools in the cluster; one urban school located in the centre of the population and a rural school servicing a broader area. Neighbouring clusters are also expected to experience growth and the provision of schooling in these clusters will influence the requirements in Belfast. Ouruhia is a semi-rural school where learners are travelling to access education.

School by School Information:

School	March 2012 Roll	Out of Zone Learners	Site Size	Investment	Utilisation	ERO Cycle	Unengaged learners
Belfast	440	0	1 ha		95%	4-5yrs	7
Ouruhia	100	28	1.2 ha		93%	3yrs	0

Current



Location of State Schools in Indicative Cluster Boundary

Proposal



Location of State Schools in Indicative Cluster Boundary

Proposal

Access	Equity	Education and governance	Infrastructure
--------	--------	--------------------------	----------------

School		Land & Infrastructure	Entity
Belfast	Full primary (Yr1-8)	Repair- investigate second campus	Continues
Ouruhia		Close site	Close

Note:

- Area of growth but the existing Belfast School has limited opportunity for site expansion.
- The state highway separates the community and all education provision is located to the east of the highway. The proposed Northern Bypass will reconnect the community, with state highways being redirected around Belfast.
- New Primary provision likely to be in the Prestons Road Development, but still to be confirmed and subject to change.

BRIGHTON Learning Community Cluster

Category – Consolidate

Catalyst for Change: Land / Building / People

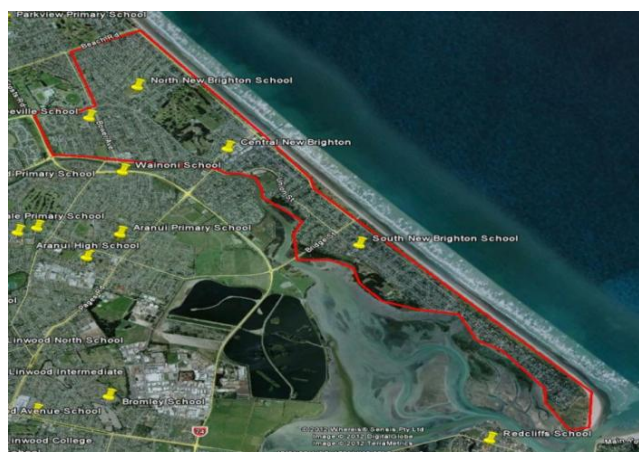
Access	Equity	Education and governance	Infrastructure
--------	--------	--------------------------	----------------

Network Summary: The Brighton cluster is an elongated cluster that is approximately 8km in length and separated from the surrounding network by the estuary and 'red zone'.

School by School Information:

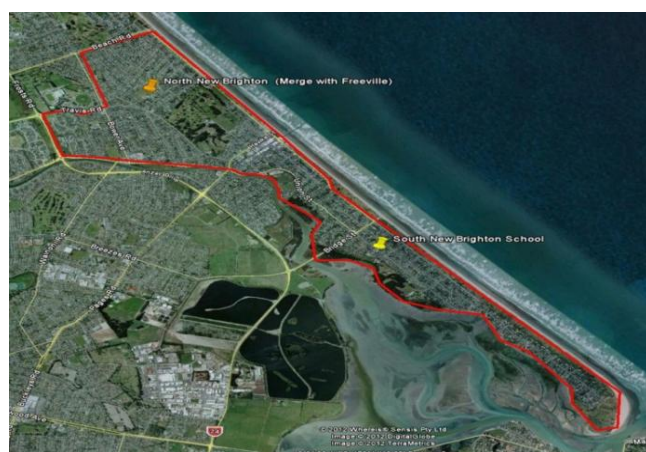
School	March 2012 Roll	Out of Zone Learners	Site Size	Investment	Utilisation	ERO Cycle	Unengaged learners
Freeville	284	0	2.2 ha		130%	3yrs	17
North New Brighton	207	0	4.7 ha		58%	3yrs	0
Central New Brighton	121	0	1.8 ha		54%	3yrs	27
South New Brighton	438	47	2.4 ha		98%	3yrs	7

Current



Location of State Schools in Indicative Cluster Boundary

Proposal



Location of State Schools in Indicative Cluster Boundary

Proposal

Access	Equity	Education and governance	Infrastructure
--------	--------	--------------------------	----------------

School	Land & Infrastructure	Entity
Freeville	Full primary (Yr1-8)	Close site.
North New Brighton	Full primary (Yr1-8)	Repair.
Central New Brighton	Full primary (Yr1-8)	Close site.
South New Brighton	Full primary (Yr1-8)	Repair.

Note:

- Waiting for completed geotechnical information

BURNSIDE Learning Community Cluster

Category – Consolidate

Catalyst for Change: Land / **Building** / People

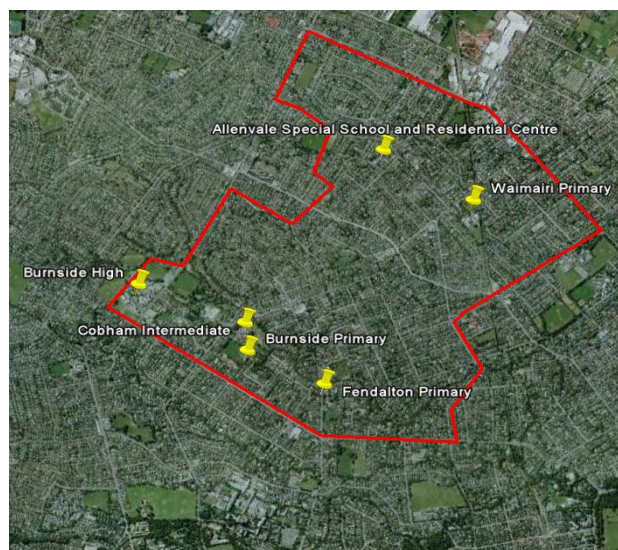
Access	Equity	Education and governance	Infrastructure
--------	--------	--------------------------	----------------

Network Summary: The Burnside cluster is not marked for significant growth.

School by School Information:

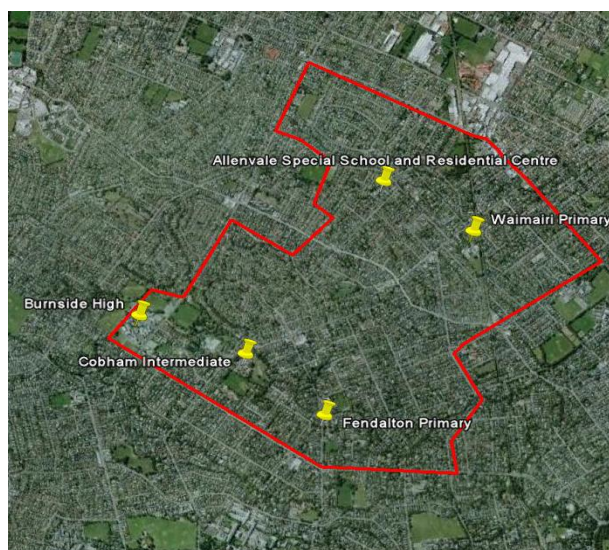
School	March 2012 Roll	Out of Zone Learners	Site Size	Investment	Utilisation	ERO Cycle	Unengaged learners	NCEA Level 2 Achievement
Allenvale	127	n/a	0.6 ha		n/a	3yrs	1	n/a
Burnside Primary	197	0	4.4 h a		78%	2yrs	0	n/a
Burnside High	2467	423	16.2 ha		100%	3yrs	52	86%
Cobham Intermediate	658	204	4.8 ha		92%	3yrs	11	n/a
Fendalton	445	90	2.6 ha		94%	3yrs	1	n/a
Waimari	451	40	2.4 ha		97%	3yrs	0	n/a

Current



Location of State Schools in Indicative Cluster Boundary

Proposal



Location of State Schools in Indicative Cluster Boundary

Proposal

Access	Equity	Education and governance	Infrastructure
--------	--------	--------------------------	----------------

School	Land & Infrastructure	Entity
Burnside	Close site	Close
Cobham Intermediate	Repair	Continues
Fendalton	Repair	Continues
Waimari	Repair	Continues

Note:

- Refer to Secondary Learning Community Cluster for Burnside High School information
- Refer to Special Education Learning Community Cluster for Allenvale information.

CASHMERE Learning Community Cluster

Category – Restore

Catalyst for Change: Land / **Building** / People

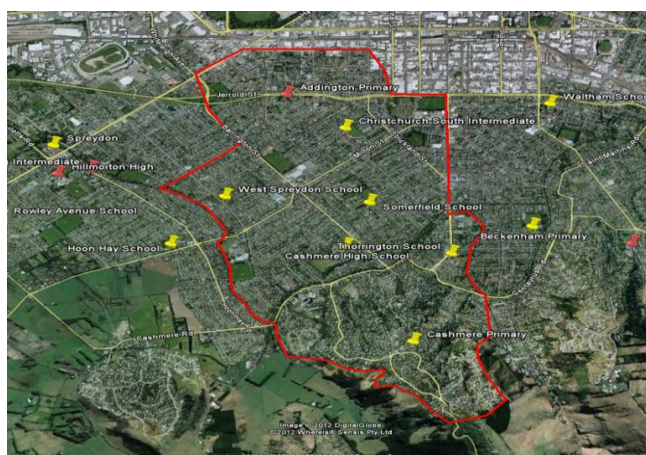
Access	Equity	Education and governance	Infrastructure
--------	--------	--------------------------	----------------

Network Summary: The Cashmere cluster consists of a range of demographics. The cluster has two distinct areas; the area on the hill to the south of the river and the area to the north of the river.

School by School Information:

School	March 2012 Roll	Out of Zone Learners	Site Size	Investment	Utilisation	ERO Cycle	Unengaged learners	NCEA Level 2 Achievement
Addington	200	0	2.1 ha		99%	3yrs	8	n/a
Cashmere Primary	445	33	1.6 ha		110%	3yrs	4	n/a
Cashmere High	1626	168	10.9ha		100%	3yrs	56	72%
Christchurch South Intermediate	497	156	3.7 ha		100%	3yrs	7	n/a
Somerfield	414	19	2.2 ha		96%	3yrs	0	n/a
Thorrington	427	16	2.6 ha		102%	3yrs	0	n/a
West Spreydon	186	0	2.5 ha		74%	3yrs	3	n/a

Current



Note:

- As West Spreydon is a contributing school to Manning Intermediate in the neighbouring cluster which is a proposed closure, West Spreydon will need to be a full primary. West Spreydon currently has capacity.
- Cashmere Primary has a constrained site. Out of zone enrolments need to be managed.
- Refer to Secondary Learning Community Cluster for Cashmere High School information.

Location of State Schools in Indicative Cluster Boundary

Proposal

Access	Equity	Education and governance	Infrastructure
--------	--------	--------------------------	----------------

School		Land & Infrastructure	Entity
Addington	Contributing (Yr1-6)	Repair	Continues
Cashmere	Full primary (Yr1-8)	Repair	Continues
Christchurch South Intermediate	Intermediate (Yr7-8)	Repair	Continues
Somerfield	Contributing (Yr1-6)	Repair	Continues
Thorrington	Contributing (Yr1-6)	Repair	Continues
West Spreydon	Full primary (Yr1-8)	Repair	Re-capitate

CENTRAL CITY Learning Community Cluster

Category – Rejuvenate

Catalyst for Change: Land / Building / People

Access	Equity	Education and governance	Infrastructure
--------	--------	--------------------------	----------------

Network Summary: There are strong relationships to neighboring networks (Shirley and Linwood).

School by School Information:

School	March 2012 Roll	Out of Zone Learners	Site Size	Investment	Utilisation	ERO Cycle	Unengaged learners	NCEA Level 2 Achievement
Southern Regional Health	0	n/a	n/a		n/a	3	0	n/a
Unlimited Paenga Tawhiti	404	1	N/A		86%	3yrs	11	57%
Discovery One	146	0	N/A		89%	3yrs	0	n/a
Chch East School	188	0	TBC		79%	1yr	0	n/a
Hagley Community College	1,303	Not available	3.7ha		91%	4-5yrs	28	60%
Phillipstown	137	17	2.0 ha		97%	3 yrs	0	n/a

Current



Location of State Schools in Indicative Cluster Boundary

Note

- Van Asch Deaf Education Centre has satellite provision at Hagley Community College.
- Refer to Linwood Learning Community Cluster for more information about the proposed Phillipstown Merger
- Refer to Special Education Learning Community Cluster for more information.

Proposal

Access	Equity	Education and governance	Infrastructure
School	Land & Infrastructure	Entity	
Unlimited Paenga Tawhiti	Composite (Yr1-13)	To be decided	Merge. To become a designated character school for Yr1-13
Discovery One	Composite (Yr1-13)	To be decided	
Chch East School	Full primary (Yr1-8)	Repair and prepare for growth.	Continues
Hagley Community College	Secondary (Yr9-13)	Repair	Continues
Phillipstown	Full primary (Yr1-8)	Close site	Merge on current Linwood College site

CHRISTCHURCH SECONDARY Learning Community Cluster

Category – Rejuvenate

Catalyst for Change: Land / Building / People

Access	Equity	Education and governance	Infrastructure
--------	--------	--------------------------	----------------

Network Summary: The secondary school network consists of single-sex and co-ed schools.

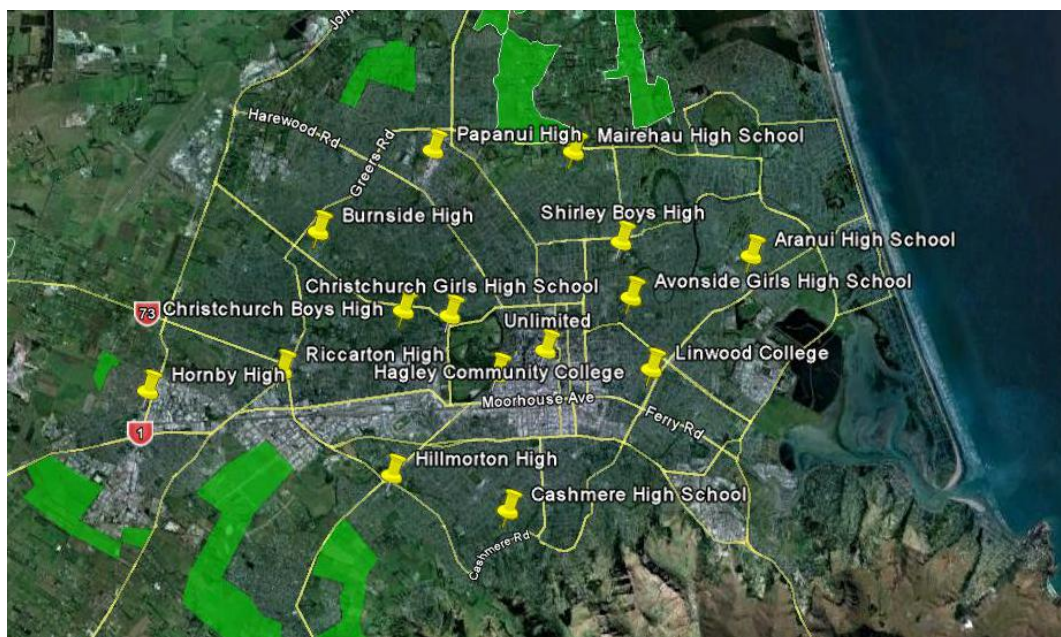
School by School Information:

School	March 2012 Roll	Out of Zone Learners	Site Size	Investment	Utilisation	ERO Cycle	Unengaged learners	NCEA Level 2 Achievement
East Christchurch								
Aranui High	516	0	8.1 ha		80%	3yrs	50	41%
Avonside Girls	973	672	4.9 ha		84%	3yrs	10	90%
Linwood College	804	0	8.1 ha		84%	3yrs	61	61%
Mairehau High	409	0	8.3 ha		93%	3yrs	29	54%
Shirley Boys	1272	951	10.9 ha		101%	3yrs	77	65%
Christchurch Boys	1266	388	11.8 ha		94%	3yrs	18	85%
Christchurch Girls	1029	396	3.4 ha		85%	3yrs	2	94%
Hornby High	446	0	8.3 ha		82%	2yrs	65	52%
Riccarton High	916	214	9.9 ha		99%	3yrs	36	74%
Burnside High	2467	423	16.2 ha		101%	3yrs	52	86%
Papanui High	1482	244	9.8 ha		108%	3yrs	55	65%
Cashmere High	1626	168	10.9 ha		107%	3yrs	56	72%
Hillmorton High	640	0	11.4 ha		93%	3yrs	10	63%
Hagley Community College	1,303	Not available	3.7ha		91%	4-5yrs	28	60%
Unlimited Paenga Tawhiti	404	1	N/A		86%	3yrs	11	57%

Note:

- Shirley Boys High School, Avonside Girls High School and Christchurch Girls High School experienced extensive land damage. Awaiting geotechnical information.
- Mairehau needs to be considered in conjunction with planned growth in north east Christchurch.
- Growth to the west and south west of the city will be serviced by existing schools (Hillmorton, Riccarton and Hornby).
- Satellite classrooms of special schools are part of the special school cluster provision across greater Christchurch.
- Proposed changes in this cluster cannot progress until all geotechnical information is known.

Current



Location of State Schools

SINGLE SEX EDUCATION

Proposal 1

Access	Equity	Education and governance	Infrastructure
--------	--------	--------------------------	----------------

School	Land & Infrastructure	Entity
Avonside Girls	Close site	Merge on CGHS site. Operate in 'dual shift'.
Christchurch Girls	Repair	
Shirley Boys	Close site	Merge on CBHS site. Operate in 'dual shift'.
Christchurch Boys	Repair	

Note:

- 'Dual Shift' – one school on site – operating a morning shift and an afternoon shift.
- Maintains total provision for approximately 5,000 learners.
- Waiting for completed geotechnical information

Proposal 2

Access	Equity	Education and governance	Infrastructure
--------	--------	--------------------------	----------------

School	Land & Infrastructure	Entity
Avonside Girls	Close site	Merge on CGHS site.
Christchurch Girls	Repair and expand.	
Christchurch Boys	Repair and expand	Merge on CBHS site.
Shirley Boys	Close site	

Note:

- Maintains total provision for approximately 5,000 learners.
- Waiting for completed geotechnical information.

Proposal 3

Access	Equity	Education and governance	Infrastructure
--------	--------	--------------------------	----------------

School	Land & Infrastructure	Entity
Avonside Girls	Close site	Close.
Christchurch Girls	Secondary (Yr9-13)	Repair
Christchurch Boys	Secondary (Yr9-13)	Repair
Shirley Boys	Close site	Close.

Note:

- Reduce provision to approximately 2,500 learners.
- Waiting for completed geotechnical information.

Proposal 4

Access	Equity	Education and governance	Infrastructure
--------	--------	--------------------------	----------------

School	Land & Infrastructure	Entity
Avonside Girls	Close site	Close.
Christchurch Girls	Secondary (Yr9-13)	Close site.
Christchurch Boys	Secondary (Yr9-13)	Repair and expand.
Shirley Boys	Close site.	Close.

Note:

- Reduce provision to approximately 2,500 learners

Secondary Innovation

Access	Equity	Education and governance	Infrastructure
--------	--------	--------------------------	----------------

School	Land & Infrastructure	Entity
Mairehau	Close	Close
Shirley Boys	Close	Close
Avonside Girls	Close	Close

Establish new school to meet single sex and co-ed education aspirations.

CO-ED SCHOOLS

Proposal

Access	Equity	Education and governance	Infrastructure
--------	--------	--------------------------	----------------

	School	Land & Infrastructure	Entity
Mairehau	Secondary (Yr9-13)	Close site	New co-ed school in new location (consider yr1-13)
Linwood	Secondary (Yr9-13)	Close site	Options as per Linwood cluster
Aranui	Secondary (Yr9-13)	Close site	Options as per Aranui cluster
Papanui	Secondary (Yr9-13)	Repair and prepare for expansion	Continues
Burnside	Secondary (Yr9-13)	Repair	Continues
Hillmorton	Secondary (Yr9-13)	Repair and prepare for expansion	Continues
Cashmere	Secondary (Yr9-13)	Repair	Continues
Riccarton	Secondary (Yr9-13)	Repair	Continues
Hornby	Secondary (Yr9-13)	Repair	Options as per Hornby Learning Community Cluster

Note:

- Refer to Central City Cluster for Unlimited Paenga Tawhiti for more info.

DARFIELD Learning Community Cluster

Category - Restore

Catalyst for Change: N/A

Access	Equity	Education and governance	Infrastructure
--------	--------	--------------------------	----------------

Network Summary:

School by School Information:

School	March 2012 Roll	Out of Zone Learners	Site Size	Investment	Utilisation	ERO Cycle	Unengaged learners	NCEA level 2 Achievement
Darfield	203	18	1.8 ha		89%	3	1	n/a
Darfield High	747	14	8.2 ha		99%	3	45	70%
Glentunnel	109	22	3.2 ha		101%	3	0	n/a
Greendale	24	0	0.8 ha		46%	3	0	n/a
Kirwee	119	8	1.2 ha		95%	3	0	n/a
Sheffield	71	0	2.4 ha		70%	3	0	n/a
Springfield	30	0	1.8 ha		78%	3	0	n/a
West Melton	269	1	2.2 ha		73%	3	0	n/a

Current



Location of State Schools in Indicative Cluster Boundary

Proposal

Access	Equity	Education and governance	Infrastructure
--------	--------	--------------------------	----------------

School		Land & Infrastructure		Entity
Darfield	Contributing primary (Yr1-6)	Repair		Continues
Glentunnel	Contributing primary (Yr1-6)	Repair		Continues
Greendale	Contributing primary (Yr1-6)	Repair		Continues
Kirwee	Contributing primary (Yr1-6)	Repair		Continues
Sheffield	Contributing primary (Yr1-6)	Repair		Continues
Springfield	Contributing primary (Yr1-6)	Repair		Continues
West Melton	Full primary (Yr1-8)	Repair		Continues

Note: Refer to

- Selwyn North Secondary for Darfield High information
- Of the 215 schools in Canterbury approximately 40% outside the greater Christchurch environs (e.g. Ashburton, Darfield, Burnham) had relatively minor earthquake damage which has subsequently been repaired. Therefore there is no costing information against these schools.

ELMWOOD Learning Community Cluster

Category – Restore

Catalyst for Change: N/A

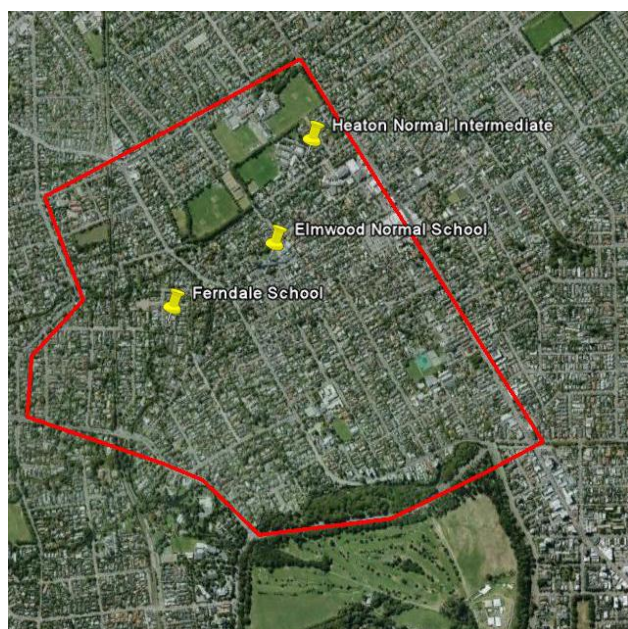
Access	Equity	Education and governance	Infrastructure
--------	--------	--------------------------	----------------

Network Summary: The Elmwood area is largely unaffected by the earthquake.

School by School Information:

School	March 2012 Roll	Out of Zone Learners	Site Size	Investment	Utilisation	ERO Cycle	Unengaged learners
Elmwood	474	126	1.8 ha		84%	3yrs	0
Ferndale	96	n/a	0.5 ha		n/a	3	7
Heaton Intermediate	517	139	4.6 ha		96%	3yrs	0

Current



Location of State Schools in Indicative Cluster Boundary

Note

- Refer to Special Education Learning Community Cluster for Ferndale School information.

Proposal

Access	Equity	Education and governance	Infrastructure
--------	--------	--------------------------	----------------

School	Land & Infrastructure	Entity
Elmwood	Contributing (Yr1-6)	Repair
Heaton Intermediate	Intermediate (Yr7-8)	Repair

HALSWELL Learning Community Cluster

Category – Consolidate

Catalyst for Change: Land / **Building** / People

Access	Equity	Education and governance	Infrastructure
--------	--------	--------------------------	----------------

Network Summary: Greenfield development is expected in the Halswell area and the schools are marked for growth. Hillmorton High and Manning Intermediate are located on neighbouring sites and both have low rolls for their respective types.

School by School Information:

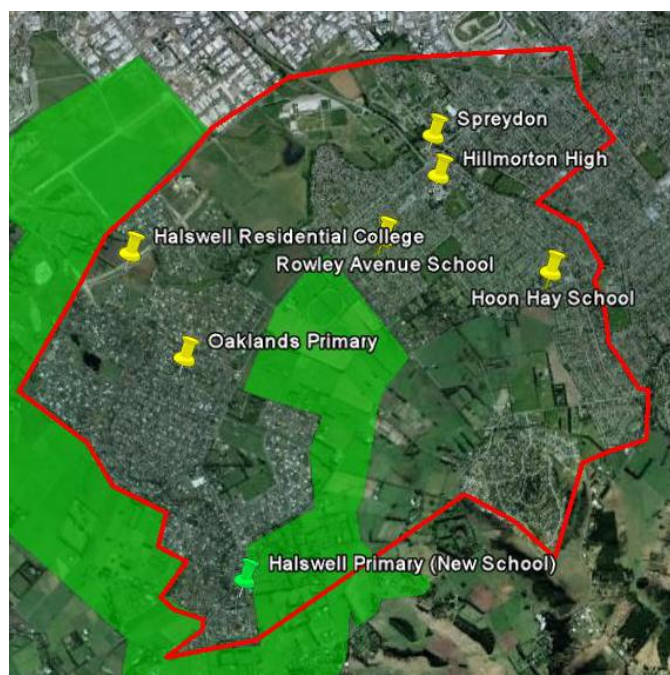
School	March 2012 Roll	Out of Zone Learners	Site Size	Investment	Utilisation	ERO Cycle	Unengaged learners	NCEA Level 2 Achievement
Halswell	523	0	2.6 ha		91%	3yrs	0	n/a
Halswell Residential	32	n/a	6.1 ha		n/a	3	6	n/a
Hillmorton High	640	0	11.4 ha		93%	3yrs	10	63%
Hoon Hay	389	0	2.5 ha		100%	4-5yrs	1	n/a
Manning Intermediate	153	0	3.5 ha		52%	3yrs	10	n/a
Oaklands	495	62	2.8 ha		96%	3yrs	3	n/a
Rowley Ave	102	0	2.4 ha		44%	3yrs	0	n/a
Spreydon	264	25	2.9 ha		92%	3yrs	2	n/a
TKKM o Te Whanau Tahī	73	0	2.6 ha		65%	3yrs	0	n/a

Current



Location of State Schools in Indicative Cluster Boundary

Proposal



Location of State Schools in Indicative Cluster Boundary

Proposal

Access	Equity	Education Performance	Infrastructure
--------	--------	-----------------------	----------------

	School	Land & Infrastructure	Entity
Halswell	Full primary (Yr1-8)	Repair (rebuild)	Continues
Hoon Hay	Full primary (Yr1-8)	Repair	Re-capitate
Manning Intermediate		Close site	Close
Oaklands	Full primary (Yr1-8)	Repair	Continues
Rowley Ave	Full primary (Yr1-8)	Repair	Re-capitate
Spreydon	Full primary (Yr1-8)	Repair	Re-capitate

Note:

- Access to facilities to support delivery of the technology curriculum to be considered
- Refer to Cashmere Learning Community Cluster for more information, the proposed Manning Intermediate closure possibly impacts on West Spreydon School
- Refer to Secondary Learning Community Cluster for Hillmorton High School information.
- Refer to Maori Medium Learning Community Cluster for TKKM o Te Whanau Tahi information.
- Refer to Special Education Learning Community Cluster for Halswell Residential College information.
- Hoon Hay, Rowley Ave and Spreydon School's are all contributing school to Manning Intermediate which is a proposed closure. As a result, all three schools will need to be re-capitated to be a full primary.

HORNBY Learning Community Cluster

Category – Rejuvenate

Catalyst for Change: Land / Building / People

Access	Equity	Education Performance	Infrastructure
--------	--------	-----------------------	----------------

Network Summary: Transport routes divide the Hornby network into distinct sub-networks. Gilberthorpe School has a large subdivision in its catchment.

School by School Information:

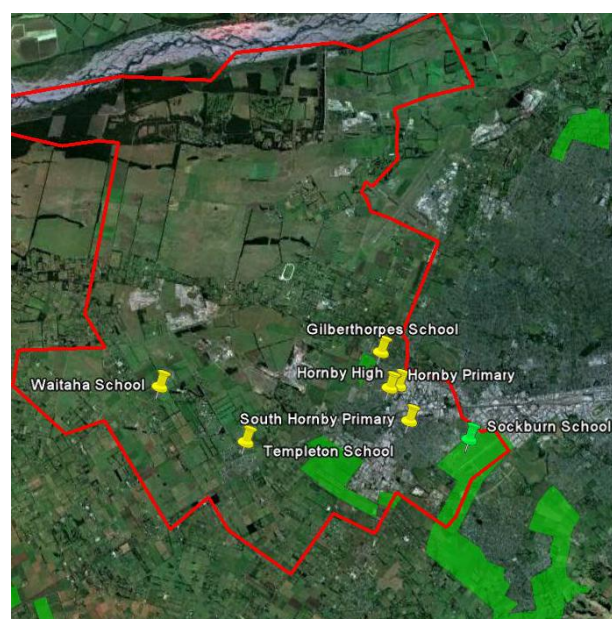
School	March 2012 Roll	Out of Zone Learners	Site Size	Investment	Utilisation	ERO Cycle	Unengaged learners	NCEA Level 2 Achievement
Branston	169	0	4.7 ha		54%	3yrs	23	n/a
Gilberthorpe	97	0	2.8 ha		60%	3yrs	0	n/a
Hornby High	446	0	8.3 ha		82%	2yrs	65	52%
Hornby Primary	130	0	2.8 ha		75%	3yrs	7	n/a
McKenzie Residential	24	n/a	2.8 ha		n/a	3	0	n/a
Sockburn	118	0	3.5 ha		50%	3yrs	0	n/a
South Hornby	282	0	2.8 ha		96%	2yrs	0	n/a
Templeton	325	21	1.9 ha		92%	3yrs	0	n/a
Waitaha School	30	n/a	0.8 ha		n/a	3	0	n/a
Yaldhurst	115	70	1.6 ha		67%	3yrs	0	n/a

Current



Location of State Schools in Indicative Cluster Boundary

Proposal



Location of State Schools in Indicative Cluster Boundary

Access	Equity	Education Performance	Infrastructure
--------	--------	-----------------------	----------------

Note:

- The Hornby Learning Community Cluster consists of a number of small schools on large sites.

	School	Land & Infrastructure	Entity
Branston		South Hornby to be relocated	Close
Gilberthorpe	Contributing (Yr1-6)	Repair	Merge on Gilberthorpe site (contributing)
Hornby High	Secondary (Yr7-13)	Repair	Re-capitate to a year 7 – 13 secondary
Hornby Primary	Contributing (Yr1-6)	Repair	Continues
Sockburn	Contributing (Yr1-6)	Close site (rebuild at new location)	Continues
South Hornby	Contributing (Yr1-6)	Close site (relocate on to Branston site)	Continues
Templeton	Full primary (Yr1-8)	Repair	Continues
Yaldhurst		Close site	Merge on Gilberthorpe site (contributing)

- Areas of greenfield development to the west of Christchurch will be serviced by the Hornby Learning Community Cluster.
- Refer to Special Education Learning Community Cluster for McKenzie Residential and Waitaha School.
- Hornby High School is proposed to change from a secondary year 9 – 13 to a secondary year 7 – 13.
- Refer to Special Education Learning Community Cluster for proposed special school base
- Refer to Special Education Learning Community Cluster for proposed special school satellite provision

HORORATA Learning Community Cluster

Category - **Restore**

Catalyst for Change: **N/A**

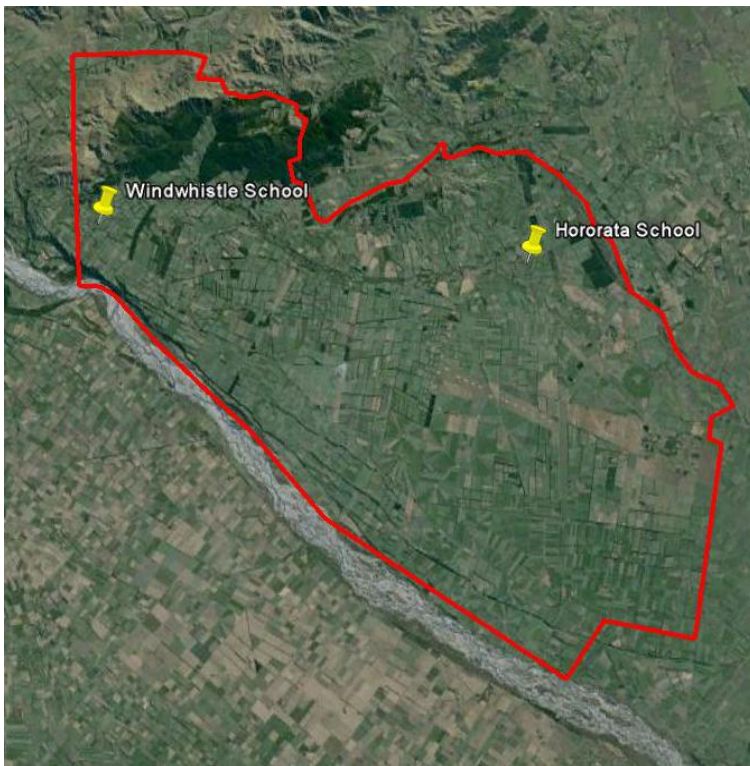
Access	Equity	Education and governance	Infrastructure
--------	--------	--------------------------	----------------

Network Summary:

School by School Information:

School	March 2012 Roll	Out of Zone Learners	Site Size	Investment	Utilisation	ERO Cycle	Unengaged learners
Hororata	59	0	2.8 ha		67%	3	0
Windwhistle	25	0	0.8 ha		62%	3	0

Current



Location of State Schools in Indicative Cluster Boundary

Proposal

Access	Equity	Education and governance	Infrastructure
--------	--------	--------------------------	----------------

School		Land & Infrastructure	Entity
Hororata	Contributing Primary (Yr1-6)	Repair	Continues
Windwhistle	Contributing Primary (Yr1-6)	Repair	Continues

Note

- Of the 215 schools in Canterbury approximately 40% outside the greater Christchurch environs (e.g. Ashburton, Darfield, Burnham) had relatively minor earthquake damage which has subsequently been repaired. Therefore there is no costing information against these schools.

KAIAPOI Learning Community Cluster

Category – Restore

Catalyst for Change: Land / Building / People

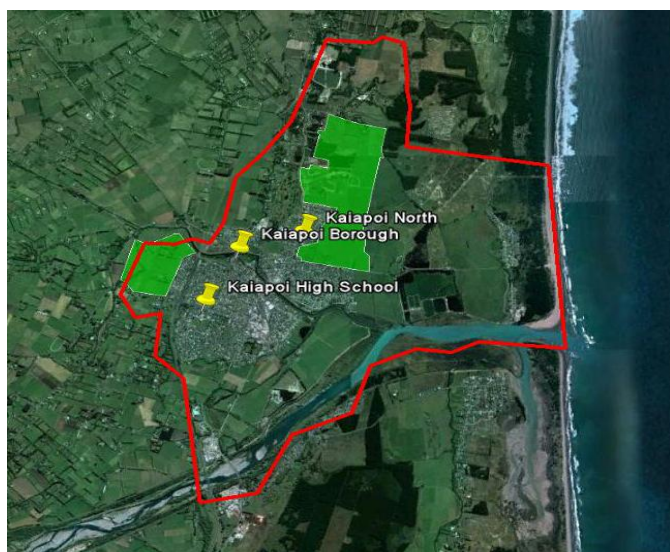
Access	Equity	Education and Governance	Infrastructure
--------	--------	--------------------------	----------------

Network Summary: Located approximately 12km north of the outer suburbs of Christchurch, the Kaiapoi cluster largely serves its local community. Kaiapoi North is located adjacent an area of proposed development so is expected to require expansion. Kaiapoi Borough's land is damaged and awaits geotechnical advice.

School by School Information:

School	March 2012 Roll	Out of Zone Learners	Site Size	Investment	% building utilisation	ERO Cycle	Unengaged learners	NCEA level 2 Achievement
Kaiapoi North	423	26	2.1 ha		95%	3yrs	10	N/A
Kaiapoi Borough	437	31	3.1 ha		83%	3yrs	6	N/A
Kaiapoi High	612	8	8.8 ha		83%	3yrs	21	61%

Current



Location of State Schools in Indicative Cluster Boundary

Proposal

Access	Equity	Education and Governance	Infrastructure
--------	--------	--------------------------	----------------

School	Land & Infrastructure	Entity
Kaiapoi North	Full primary (Yr1-8)	Repair
Kaiapoi Borough	Full primary (Yr1-8)	Repair
Kaiapoi High	Secondary (Yr9-13)	Repair

Note:

- Waiting for completed geotechnical information
- Kaiapoi Borough may need to relocate from the site, subject to confirmation of the geotechnical report.
- Refer to Special Education Learning Community Cluster for proposed special school base

LEESTON Learning Community Cluster

Category - Restore

Catalyst for Change: N/A

Access	Equity	Education and governance	Infrastructure
--------	--------	--------------------------	----------------

Network Summary:

School by School Information:

School	March 2012 Roll	Out of Zone Learners	Site Size	Investment	Utilisation	ERO Cycle	Unengaged learners	NCEA level 2 Achievement
Dunsandel	121	0	2.3 ha		89%	3	0	n/a
Ellesmere College	510	0	8.2 ha		80%	3	22	69%
Leeston	267	11	2.5 ha		95%	3	3	n/a
Southbridge	152	0	4.9 ha		95%	4-5	2	n/a

Current



Location of State Schools in Indicative Cluster Boundary
Proposal

Access	Equity	Education and governance	Infrastructure
--------	--------	--------------------------	----------------

School		Land & Infrastructure	Entity
Dunsandel	Contributing Primary (Yr1-6)	Repair	Continues
Leeston	Contributing Primary (Yr1-6)	Repair	Continues
Southbridge	Contributing Primary (Yr1-6)	Repair	Continues

Note: Refer to Selwyn South Secondary for Ellesmere College information.

- Of the 215 schools in Canterbury approximately 40% outside the greater Christchurch environs (e.g. Ashburton, Darfield, Burnham) had relatively minor earthquake damage which has subsequently been repaired. Therefore there is no costing information against these schools.

LINCOLN Learning Community Cluster

Category - Rejuvenate

Catalyst for Change: Buildings / Land / People

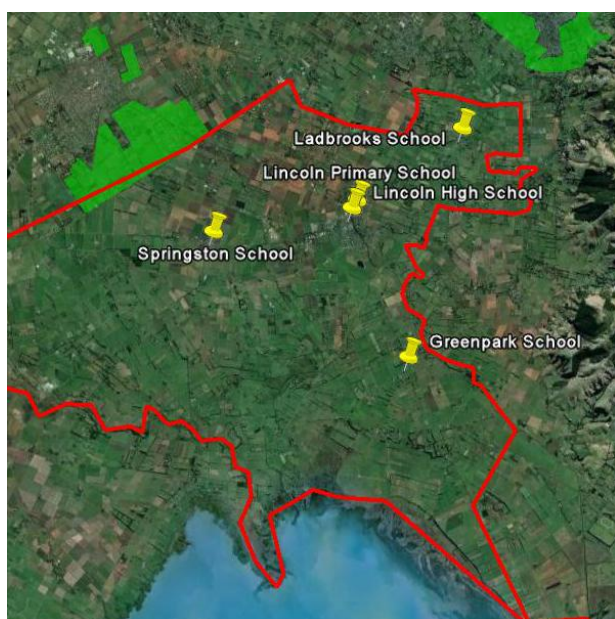
Access	Equity	Education and governance	Infrastructure
--------	--------	--------------------------	----------------

Network Summary:

School by School Information:

School	March 2012 Roll	Out of Zone Learners	Site Size	Investment	Utilisation	ERO Cycle	Unengaged learners	NCEA level 2 Achievement
Greenpark	38	0	0.8 ha		43%	3	0	n/a
Ladbrooks	95	1	1.0 ha		111%	3	0	n/a
Lincoln	363	15	3.2 ha		79%	3	3	n/a
Lincoln High	1558	175	9.8 ha		111%	3	30	77%
Springston	192	23	1.6 ha		105%	3	2	n/a

Current



Location of State Schools in Indicative Cluster Boundary

Current



Location of State Schools in Indicative Cluster Boundary

Proposal

Access	Equity	Education and governance	Infrastructure
--------	--------	--------------------------	----------------

School	Land & Infrastructure	Entity
Greenpark	Close site	Close
Ladbrooks	Full primary (Yr1-8)	Repair
Lincoln	Full primary (Yr1-8)	Repair
Springston	Full primary (Yr1-8)	Repair

Note:

- Refer to Selwyn South Secondary for Lincoln High information

- Of the 215 schools in Canterbury approximately 40% outside the greater Christchurch environs (e.g. Ashburton, Darfield, Burnham) had relatively minor earthquake damage which has subsequently been repaired. Therefore there is no costing information against these schools.

LINWOOD Learning Community Cluster

Category – Rejuvenate

Catalyst for Change: Land / Building / People

Access	Equity	Education and governance	Infrastructure
--------	--------	--------------------------	----------------

Network Summary: Utilisation is well below capacity. Linwood College is located on a split site, with their sports field being located approximately a kilometer away.

Phillipstown School is a technology provider for 1,300-1,400 year 7 and 8 learners.

School by School Information:

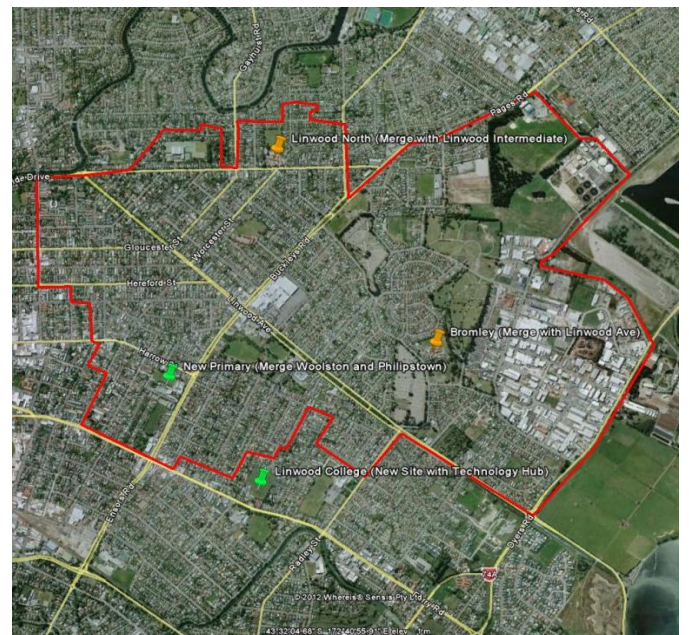
School	March 2012 Roll	Out of Zone Learners	Site Size	Investment	Utilisation	ERO Cycle	Unengaged learners	NCEA Level 2 Achievement
Bromley	239	0	2.1 ha		77%	3yrs	4	N/A
Linwood Ave	259	0	2.5 ha		66%	3yrs	3	N/A
Linwood College	865	0	8.2 ha		84%	3yrs	61	61%
Linwood Intermediate	127	0	2.7 ha		36%	3yrs	18	N/A
Linwood North	122	0	3.2 ha		59%	3yrs	5	N/A
Woolston	220	0	1.5 ha		100%	3yrs	4	N/A

Current



Location of State Schools in Indicative Cluster Boundary

Proposal



Location of State Schools in Indicative Cluster Boundary

Proposal

Access	Equity	Education and governance	Infrastructure
--------	--------	--------------------------	----------------

School		Land & Infrastructure	Entity
Bromley	Full primary (Yr1-8)	Repair and expand.	Merge on Bromley site. Re-capitate.
Linwood Ave		Close site.	
Linwood College	Secondary (Yr9-13)	Build new primary education facility for merger of Woolston and Phillipstown schools.	Rebuild and relocate.
Linwood Intermediate		Close site.	Close.
Linwood North	Full primary (Yr1-8)	Repair.	Re-capitate
Phillipstown	Full primary (Yr1-8)	Close site.	Merge on current Linwood College site. New development
Woolston		Close site.	

Note:

- Phillipstown currently located in Central City Learning Community Cluster
- Ferndale School has a satellite provision at Bromley School
- Refer to Special Education Learning Community Cluster for more information.
- Bromley and Linwood Ave are currently both contributing schools, the proposal is to merge the two schools on the Bromley site, close the Linwood Ave site and re-capitate to a year 1 -8 school
- Phillipstown and Woolston Schools are proposed to merge on the current Linwood College site.
- Linwood North is proposed to change to a full primary years 1 -8, as the proposal is to close Linwood Intermediate.
- This proposal will involve a complex programme of works, for example the new Linwood College will have to be completed and operational before any work can commence for the new development of the merged Phillipstown and Woolston Schools.
- Future technology provision to be determined.
- Refer to Special Education Learning Community Cluster for proposed special school base

LYTTELTON Learning Community Cluster

Category – Consolidate

Catalyst for Change: Land / Building / People

Access	Equity	Education and Governance	Infrastructure
--------	--------	--------------------------	----------------

Network Summary: The Lyttelton cluster is located on Banks Peninsula and is isolated from the surrounding school network. The two schools are located just over 1km apart and currently serve 240 learners.

School by School Information:

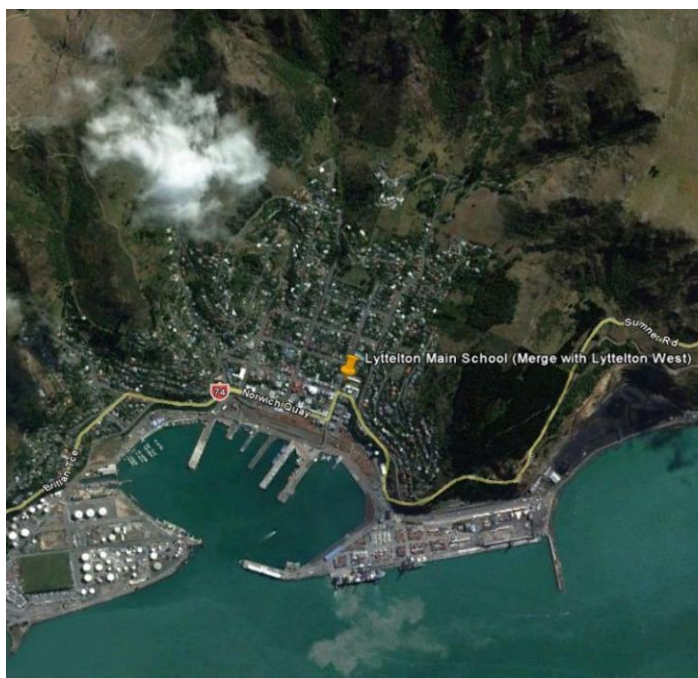
School	March 2012 Roll	Out of Zone Learners	Site Size	Investment	Utilisation	ERO Cycle	Unengaged learners
Lyttelton West	128	0	0.6 ha		86%	3yrs	0
Lyttelton Main	112	0	0.9 ha		77%	3yrs	0

Current



Location of State Schools in Indicative Cluster Boundary

Proposal



Location of State Schools in Indicative Cluster Boundary

Proposal

Access	Equity	Education and Governance	Infrastructure
--------	--------	--------------------------	----------------

School	School	Land & Infrastructure	Entity
Lyttelton West	Full primary (Yr1-8)	Close site.	Merge on Lyttelton Main site and/or explore site expansion options.
Lyttelton Main		Repair and expand	

LYTTELTON HARBOUR Learning Community Cluster

Category – Restore

Catalyst for Change: N/A

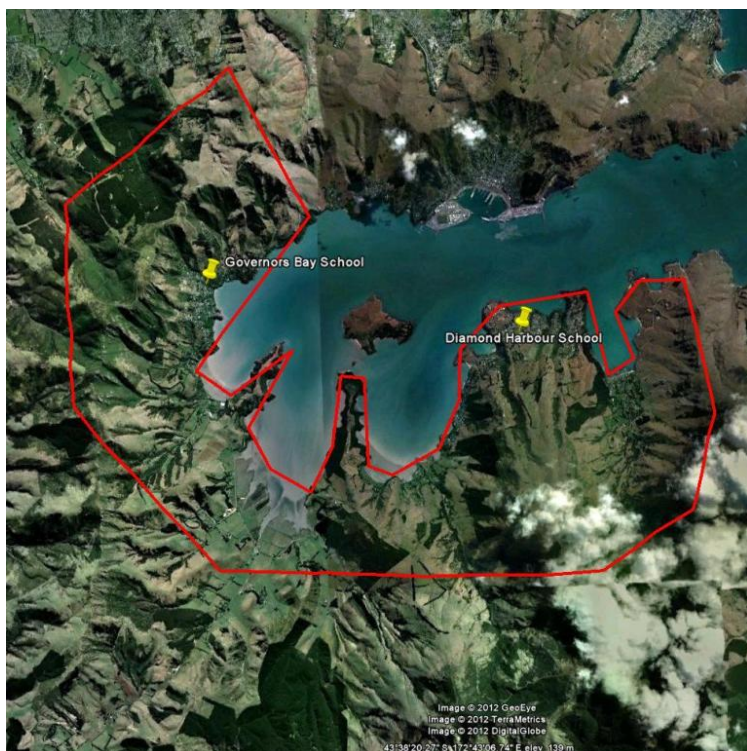
Access	Equity	Education and governance	Infrastructure
--------	--------	--------------------------	----------------

Network Summary: The schools in the Lyttelton Harbour cluster are isolated due to the geography of Banks Peninsula. The schools provide access to primary age education to their local communities.

School by School Information:

School	March 2012 Roll	Out of Zone Learners	Site Size	Investment	Utilisation	ERO Cycle	Unengaged learners
Diamond Harbour	105	0	1.7ha		92%	3yrs	1
Governors Bay	61	0	0.6ha		68%	3yrs	0

Current



Location of State Schools in Indicative Cluster Boundary

Proposal

Access	Equity	Education and governance	Infrastructure
--------	--------	--------------------------	----------------

School		Land & Infrastructure	Entity
Diamond Harbour	Full primary (Yr1-8)	Repair	Continues
Governors Bay	Full primary (Yr1-8)	Repair	Continues

MAIREHAU Learning Community Cluster

Category – Consolidate

Catalyst for Change: Land / **Building** / People

Access	Equity	Education Performance	Infrastructure
--------	--------	-----------------------	----------------

Network Summary: Mairehau is located adjacent to the earthquake damaged cluster of Shirley.

School by School Information:

School	March 2012 Roll	Out of Zone Learners	Site Size	Investment	Utilisation	ERO Cycle	Unengaged learners	NCEA Level 2 Achievement
Glenmoor	40	0	2.3 ha		45%	2yrs	1	n/a
Mairehau Primary	341	64	2.9 ha		97%	3yrs	10	n/a
Mairehau High	409	0	8.3 ha		93%	3yrs	29	54%

Current

Proposal



Location of State Schools in Indicative Cluster Boundary



Location of State Schools in Indicative Cluster Boundary

Proposal

Access	Equity	Education Performance	Infrastructure
--------	--------	-----------------------	----------------

School	Land & Infrastructure	Entity
Glenmoor	Close	Close
Mairehau	Full primary (Yr1-8)	Repairs

Note

- Ferndale School has satellite provision at Glenmoor School
- Refer to Special Education Learning Community Cluster for more information.
- Refer to secondary Learning Community Cluster for Mairehau High information

MAORI MEDIUM EDUCATION Learning Community Cluster

Category - **Consolidate**

Catalyst for Change: Land / Building / People

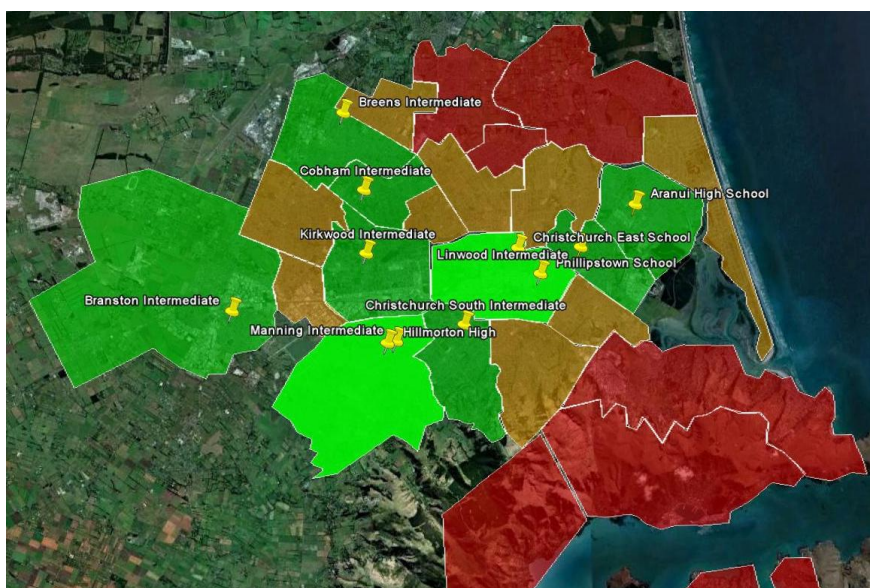
Access	Equity	Education and governance	Infrastructure
--------	--------	--------------------------	----------------

Network Summary:

School by School Information:

School	March 2012 Roll	Out of Zone Learners	Site Size	Investment	Utilisation	ERO Cycle	Unengaged learners
TKKM o Waitaha	78	0	2.0 ha		56%	3yrs	7
TKKM o Te Whanau Tahī	73	0	2.6 ha		65%	3yrs	0

Current



Current Maori Medium and Bi lingual provision

Current



Proposal

Access	Equity	Education and governance	Infrastructure
--------	--------	--------------------------	----------------

School	Land & Infrastructure	Entity
TKKM o Waitaha	Merge	Merge
TKKM o Te Whanau Tahī		
Proposed future provision	TBC	TBC

Note: Current bilingual / immersion units are at the following schools

- Cobham Intermediate in the Burnside Learning Community Cluster
- St Albans School in the St Albans Learning Community Cluster
- Shirley Intermediate in the Shirley Learning Community Cluster
- Freeville School in the Brighton Learning Community Cluster
- Wainoni School in the Aranui Learning Community Cluster
- Hornby Primary in the Hornby Learning Community Cluster
- Branton Intermediate in the Hornby Learning Community Cluster
- Rowley Ave School in the Halswell Learning Community Cluster
- Manning Intermediate in the Halswell Learning Community Cluster
- Woolston Primary in the Woolston Learning Community Cluster

OXFORD Learning Community Cluster

Category - **Restore**

Catalyst for Change: **N/A**

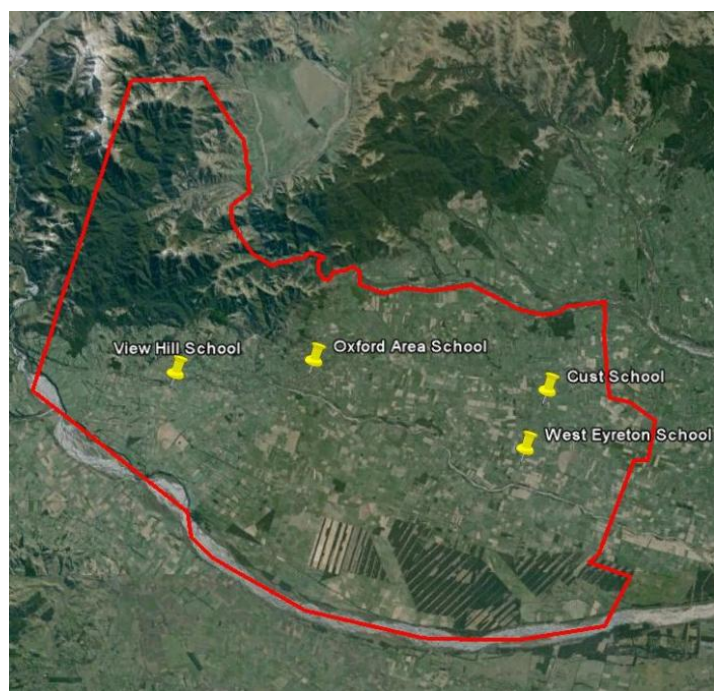
Access	Equity	Education and governance	Infrastructure
--------	--------	--------------------------	----------------

Network Summary:

School by School Information:

School	March 2012 Roll	Out of Zone Learners	Site Size	Investment	Utilisation	ERO Cycle	Unengaged learners	NCEA level 2 Achievement
Cust	140	0	1.2 ha		96%	3	0	n/a
Oxford Area	517	0	4.2 ha		107%	3	26	69%
View Hill	36	0	0.7 ha		66%	3	0	n/a
West Eyreton	163	0	1.5 ha		106%	3	0	n/a

Current



Location of State Schools in Indicative Cluster Boundary

Proposal

Access	Equity	Education and governance	Infrastructure
--------	--------	--------------------------	----------------

School		Land & Infrastructure	Entity
Cust	Full primary (Yr1-8)	Repair	Continues
Oxford Area	Composite (Yr1-15)	Repair	Continues
View Hill	Full primary (Yr1-8)	Repair	Continues
West Eyreton	Full primary (Yr1-8)	Repair	Continues

Note: Oxford area school roll is for years 1-15.

- Of the 215 schools in Canterbury approximately 40% outside the greater Christchurch environs (e.g. Ashburton, Darfield, Burnham) had relatively minor earthquake damage which has subsequently been repaired. Therefore there is no costing information against these schools.

PAPANUI Learning Community Cluster

Category – Restore

Catalyst for Change: Land / Building / People

Access	Equity	Education Performance	Infrastructure
--------	--------	-----------------------	----------------

Network Summary: The Papanui cluster borders an area of proposed growth.

School by School Information:

School	March 2012 Roll	Out of Zone Learners	Site Size	Investment	Utilisation	ERO Cycle	Unengaged learners	NCEA Level 2 Achievement
Bishopdale	112	0	2.2 ha		57%	3yrs	0	
Casebrook Intermediate	395	0	4 ha		78%	3yrs	17	
Cotswold	487	100	2.4 ha		105%	3yrs	2	
Northcote	137	0	2.7 ha		55%	3yrs	2	
Papanui High	1482	244	9.8 ha		100%	3yrs	55	65%

Current



Note

- Ferndale School has satellite provision at Northcote School
- Refer to Special Education Learning Community Cluster for more information.

Location of State Schools in Indicative Cluster Boundary

Proposal

Access	Equity	Education Performance	Infrastructure
--------	--------	-----------------------	----------------

School		Land & Infrastructure	Entity
Bishopdale	Contributing (Yr1-6)	Repair	Continues
Casebrook Intermediate	Intermediate (Yr7-8)	Repair	Continues
Cotswold	Contributing (Yr1-6)	Repair	Continues
Northcote	Contributing (Yr1-6)	Repair	Continues

Note:

- Refer to Secondary Learning Community Cluster for Papanui High School information.

PARKLANDS Learning Community Cluster

Category – Consolidate

Catalyst for Change: Land / Building / People

Access	Equity	Education and Governance	Infrastructure
--------	--------	--------------------------	----------------

Network Summary: The Parklands cluster is located to the north-east of Christchurch and is now separated from surrounding networks by the 'red zone' to the south and farm land to the west. Development is planned on the western edge of the cluster.

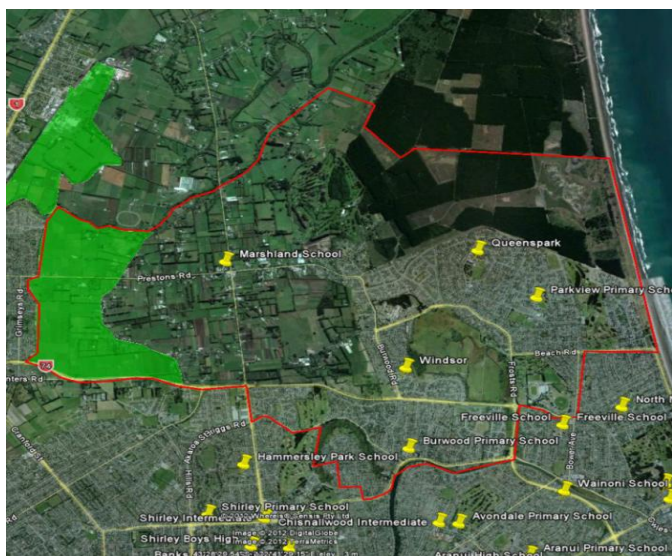
School by School Information:

School	March 2012 Roll	Out of Zone Learners	Site Size	Investment	Utilisation	ERO Cycle	Unengaged learners
Burwood	276	88	3.1 ha		82%	2yrs	3
Marshlands	194	77	1.7 ha		99%	3yrs	0
Parkview	325	0	2.5 ha		89%	3yrs	1
Queenspark	533	49	2.5 ha		96%	3yrs	0
Windsor	538	29	2.3 ha		111%	3yrs	0

Utilisation: calculated using the February 2012 teaching space counts and the March 2012 roll return data.

Current

Proposal



Location of State Schools in Indicative Cluster Boundary

Location of State Schools in Indicative Cluster Boundary

Proposal

Access	Equity	Education and Governance	Infrastructure
--------	--------	--------------------------	----------------

School	Land & Infrastructure	Entity
Burwood	Close site.	Merge on Windsor site and re-capitate to Yr1-8
Marshlands	Full primary (Yr1-8) or Composite (Yr1-13)	Relocate to new location providing for Yr 1-13 learners (at least Yr 1-8)
Parkview	Full primary (Yr1-8)	Continue
Queenspark	Full primary (Yr1-8)	Continue
Windsor	Full primary (Yr1-8)	Merge on Windsor site and re-capitate to Yr1-8

Note: Refer to Special Education Learning Community Cluster for proposed special school satellite provision

PORT HILLS Learning Community Cluster

Category – Restore

Catalyst for Change: Land / Building / People

Access	Equity	Education and governance	Infrastructure
--------	--------	--------------------------	----------------

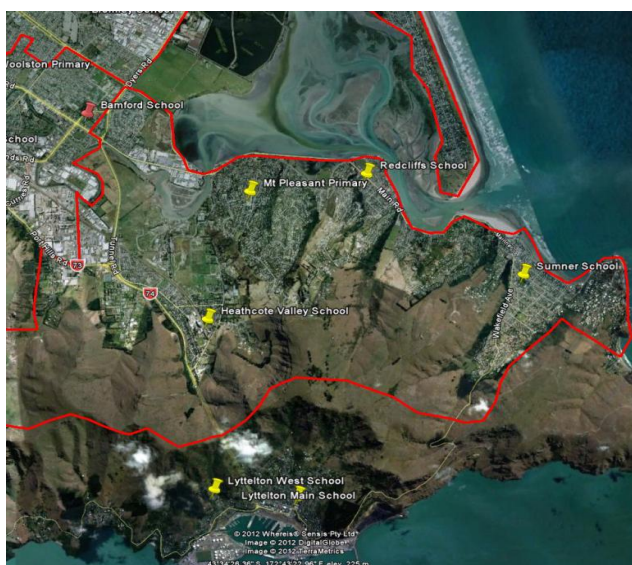
Network Summary: The Port Hills cluster is geographically defined and the schools are distinctly separated by the landscape. Existing sites are small with limited scope for expansion.

School by School Information:

School	March 2012 Roll	Out of Zone Learners	Site Size	Investment	Utilisation	ERO Cycle	Unengaged learners
Heathcote Valley	241	9	1.7 ha		81%	3yrs	0
Mt Pleasant	321	24	1.6 ha		94%	3yrs	0
Redcliffs	243	9	1.9 ha		88%	3yrs	1
Van Asch	20	n/a	7.9 ha		n/a	3	6
Sumner	393	0	2.7 ha		81%	4-5yrs	0

Utilisation: calculated using the February 2012 teaching space counts and the March 2012 roll return data.

Current



Location of State Schools in Indicative Cluster Boundary

Proposal

Access	Equity	Education and governance	Infrastructure
--------	--------	--------------------------	----------------

School		Land & Infrastructure	Entity
Heathcote Valley	Full primary (Yr1-8)	Repair	Continues
Mt Pleasant	Full primary (Yr1-8)	Repair	Continues
Redcliffs	Full primary (Yr1-8)	Repair	Continues
Sumner	Full primary (Yr1-8)	Repair	Continues

Note:

- Waiting for completed geotechnical information, particularly for Redcliffs. This information may change the category of this cluster.
- Refer to Special Education Learning Community Cluster for Van Asch Deaf Education information.

PREBBLETON Learning Community Cluster

Category - **Restore**

Catalyst for Change: **N/A**

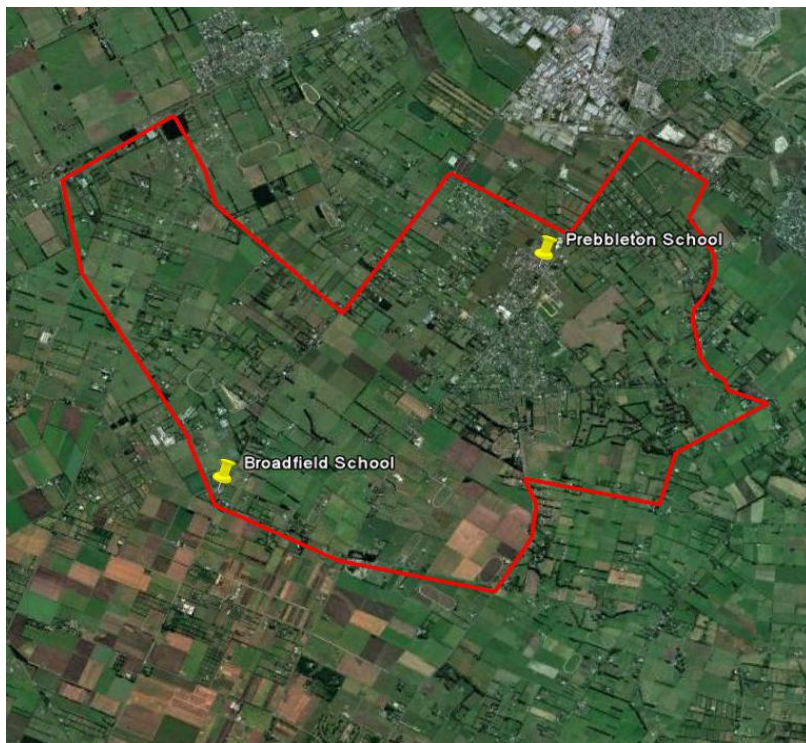
Access	Equity	Education and governance	Infrastructure
--------	--------	--------------------------	----------------

Network Summary:

School by School Information:

School	March 2012 Roll	Out of Zone Learners	Site Size	Investment	Utilisation	ERO Cycle	Unengaged learners
Broadfield	100	0	1.8 ha		85%	3	0
Prebbleton	371	4	1.9 ha		99%	3	0

Current



Location of State Schools in Indicative Cluster Boundary

Proposal

Access	Equity	Education and governance	Infrastructure
--------	--------	--------------------------	----------------

School		Land & Infrastructure	Entity
Broadfield	Full primary (Yr1-8)	Repair	Continues
Prebbleton	Full primary (Yr1-8)	Repair	Continues

Note: Of the 215 schools in Canterbury approximately 40% outside the greater Christchurch environs (e.g. Ashburton, Darfield, Burnham) had relatively minor earthquake damage which has subsequently been repaired. Therefore there is no costing information against these schools.

RANGIORA Learning Community Cluster

Category - Restore

Catalyst for Change: N/A

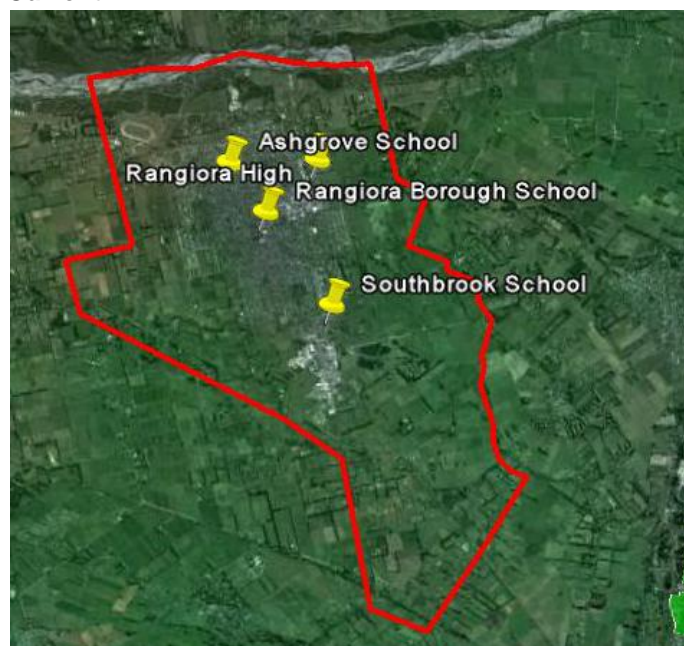
Access	Equity	Education and governance	Infrastructure
--------	--------	--------------------------	----------------

Network Summary:

School by School Information:

School	March 2012 Roll	Out of Zone Learners	Site Size	Investment	Utilisation	ERO Cycle	Unengaged learners	NCEA level 2 Achievement
Ashgrove	481	91	3.2 ha		97%	3	3	n/a
Rangiora Borough	482	55	1.9 ha		75%	3	2	n/a
Rangiora High	1796	44	2.9 ha		102%	2	23	70%
Southbrook	315	52	1.5		104%	3	0	n/a

Current



Location of State Schools in Indicative Cluster Boundary

Proposal

Access	Equity	Education and governance	Infrastructure
--------	--------	--------------------------	----------------

School		Land & Infrastructure	Entity
Ashgrove	Full primary (Yr1-8)	Repair	Continues
Rangiora Borough	Full primary (Yr1-8)	Repair	Continues
Southbrook	Full primary (Yr1-8)	Repair	Continues

Note: Refer to Waimakariri Secondary for Rangiora High information

- Refer to Special Education Learning Community Cluster for proposed special school satellite provision **Note:** Of the 215 schools in Canterbury approximately 40% outside the greater Christchurch environs (e.g. Ashburton, Darfield, Burnham) had relatively minor earthquake damage which has subsequently been repaired. Therefore there is no costing information against these schools.

REDWOOD Learning Community Cluster

Category – Restore

Catalyst for Change: N/A

Access	Equity	Education and governance	Infrastructure
--------	--------	--------------------------	----------------

Network Summary: The Redwood cluster is marked for significant residential development and any spare capacity in the network is likely to be utilised.

School by School Information:

School	March 2012 Roll	Out of Zone Learners	Site Size	Investment	Utilisation	ERO Cycle	Unengaged learners	NCEA Level 2 Achievement
Papanui	171	8	2.3 ha		100%	3yrs	3	n/a
Redwood	353	78	2.3 ha		87%	3yrs	1	n/a

Current



Location of State Schools in Indicative Cluster Boundary

Proposal

Access	Equity	Education and governance	Infrastructure
--------	--------	--------------------------	----------------

School		Land & Infrastructure	Entity
Papanui	Contributing (Yr1-6)	Repair and prepare for expansion.	Continues
Redwood	Contributing (Yr1-6)	Repair and prepare for expansion.	Continues

RICCARTON Learning Community Cluster

Category – Restore

Catalyst for Change: N/A

Access	Equity	Education and governance	Infrastructure
--------	--------	--------------------------	----------------

Network Summary: There is potential increase in demand for primary schooling in this network.

Commercial/industrial developments and the Riccarton Racecourse separate this network to the south and west from the surrounding school network. Canterbury University and the College of Education are located in the Riccarton cluster.

School by School Information:

School	March 2012 Roll	Out of Zone Learners	Site Size	Investment	Utilisation	ERO Cycle	Unengaged learners	NCEA Level 2 Achievement
Ilam	405	141	2.8 ha		84%	3yrs	3	n/a
Wharenui	148	0	2.4 ha		88%	2yrs	0	n/a
Kirkwood Intermediate	342	0	4.1 ha		99%	3yrs	8	n/a
Christchurch Girls High	1029	396	3.4 ha		85%	3yrs	2	94%
Christchurch Boys High	1266	388	11.8 ha		94%	3yrs	18	85%

Current



Location of State Schools in Indicative Cluster Boundary

Note

- Van Asch Deaf Education Centre has satellite provision at Wharenui School.
- Refer to Special Education Learning Community Cluster for more information.
- Refer to Christchurch Secondary Learning Community Cluster for Christchurch Boys High and Christchurch Girls High information.

Proposal

Access	Equity	Education and governance	Infrastructure
--------	--------	--------------------------	----------------

School		Land & Infrastructure	Entity
Ilam	Contributing (Yr1-6)	Repair	Continues
Wharenui	Full primary (Yr1-8)	Repair	Continues
Kirkwood Intermediate	Intermediate (Yr7-8)	Repair	Continues

ROLLESTON Learning Community Cluster

Category – Rejuvenate

Catalyst for Change: Land / Building / **People**

Access	Equity	Education and governance	Infrastructure
--------	--------	--------------------------	----------------

Network Summary: Rolleston was a cluster marked for growth prior to the earthquake. Growth in the area has seen stage 2 of Clearview Primary commence.

School by School Information:

School	March 2012 Roll	Out of Zone Learners	Site Size	Investment	Utilisation	ERO Cycle	Unengaged learners
Burnham	136	0	2.2 ha		69%	3yrs	2
Clearview	450	18	3.3 ha		99%	3yrs	0
Rolleston	615	1	2.4 ha		80%	3yrs	2
Weedons	139	47	1.8 ha		105%	3yrs	0

Current



Location of State Schools in Indicative Cluster Boundary

Proposal



Location of State Schools in Indicative Cluster Boundary

Proposal

Access	Equity	Education and governance	Infrastructure
--------	--------	--------------------------	----------------

School	Land & Infrastructure	Entity
Burnham	Close site	Close
Clearview	Full primary (Yr1-8)	Repair
New Primary	tbc	New
Rolleston	Full primary (Yr1-8)	Repair
Secondary	tbc	New
Weedons	Full primary (Yr1-8)	Repair

Note: The new primary provision at Rolleston would have to be operational before the proposed closure of Burnham is implemented.

- Refer to Special Education Learning Community Cluster for proposed special school base
- Refer to Special Education Learning Community Cluster for proposed special school satellite provision
- Of the 215 schools in Canterbury approximately 40% outside the greater Christchurch environs (e.g. Ashburton, Darfield, Burnham) had relatively minor earthquake damage which has subsequently been repaired. Therefore there is no costing information against these schools.

ROYDVALE Learning Community Cluster

Category – Consolidate

Catalyst for Change: Land / **Building** / People

Access	Equity	Education and governance	Infrastructure
--------	--------	--------------------------	----------------

Network Summary: The network consists of a number of schools with low to medium sized rolls.

School by School Information:

School	March 2012 Roll	Out of Zone Learners	Site Size	Investment	Utilisation	ERO Cycle	Unengaged learners
Breens Intermediate	248	0	4.2 ha		74%	3yrs	13
Harewood	164	94	2.4 ha		83%	3yrs	0
Isleworth	209	0	2.5 ha		73%	4-5yrs	1
Kendal	90	0	2.5 ha		58%	3yrs	2
Roydvale	279	16	2.7 ha		105%	3yrs	0
Wairakei	217	0	2.6 ha		91%	3yrs	2

Utilisation: calculated using the February 2012 teaching space counts and the March 2012 roll return data.

Current



Location of State Schools in Indicative Cluster Boundary

Proposal



Location of State Schools in Indicative Cluster Boundary

Proposal

Access	Equity	Education and governance	Infrastructure
--------	--------	--------------------------	----------------

School	Land & Infrastructure	Entity
Breens Intermediate	Intermediate (Yr7-8)	Repair
Harewood	Contributing (Yr1-6)	Repair
Isleworth	Contributing (Yr1-6)	Repair
Kendal		Close
Roydvale	Contributing (Yr1-6)	Repair
Wairakei	Contributing (Yr1-6)	Repair

Note: Ferndale School has satellite provision at Wairakei School.

- Future technology provision to be determined.
- Refer to Special Education Learning Community Cluster for proposed special school satellite provision.

SELWYN SOUTH SECONDARY Learning Community Cluster

Category - Rejuvenate

Catalyst for Change: Buildings / Land / People

Access	Equity	Education and governance	Infrastructure
--------	--------	--------------------------	----------------

Network Summary:

School by School Information:

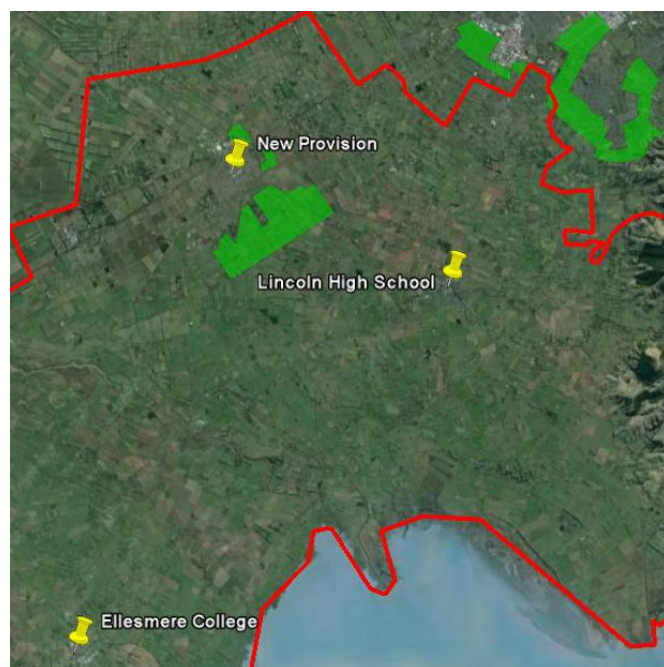
School	March 2012 Roll	Out of Zone Learners	Site Size	Investment	Utilisation	ERO Cycle	Unengaged learners	NCEA level 2 Achievement
Ellesmere College	510	0	8.2 ha		80%	3	22	69%
Lincoln High	1558	175	9.8 ha		111%	3	30	77%

Current



Location of State Schools in Indicative Cluster Boundary

Proposal



Location of State Schools in Indicative Cluster Boundary

Proposal

Access	Equity	Education and governance	Infrastructure
--------	--------	--------------------------	----------------

School		Land & Infrastructure	Entity
Ellesmere College	Secondary (Yr7-15)	Repair	Continues
Lincoln High	Secondary (Yr9-15)	Repair and expand	Continues
Rolleston	TBC	New	New

Note:

- See Rolleston Learning Community Cluster for more information.
- Of the 215 schools in Canterbury approximately 40% outside the greater Christchurch environs (e.g. Ashburton, Darfield, Burnham) had relatively minor earthquake damage which has subsequently been repaired. Therefore there is no costing information against these schools.

SELWYN NORTH SECONDARY Learning Community Cluster

Category - **Restore**

Catalyst for Change: **N/A**

Access	Equity	Education and governance	Infrastructure
--------	--------	--------------------------	----------------

Network Summary:

School by School Information:

School	March 2012 Roll	Out of Zone Learners	Site Size	Investment	Utilisation	ERO Cycle	Unengaged learners	NCEA level 2 Achievement
Darfield High	747	14	8.2 ha		99%	3	45	70%

Current



Location of State Schools in Indicative Cluster Boundary

Proposal

Access	Equity	Education and governance	Infrastructure
--------	--------	--------------------------	----------------

School		Land & Infrastructure	Entity
Darfield High	Secondary (Yr7-15)	Repair	Continues

Note: Of the 215 schools in Canterbury approximately 40% outside the greater Christchurch environs (e.g. Ashburton, Darfield, Burnham) had relatively minor earthquake damage which has subsequently been repaired. Therefore there is no costing information against these schools.

SHIRLEY Learning Community Cluster

Category – Rejuvenate

Catalyst for Change: Land / Building / People

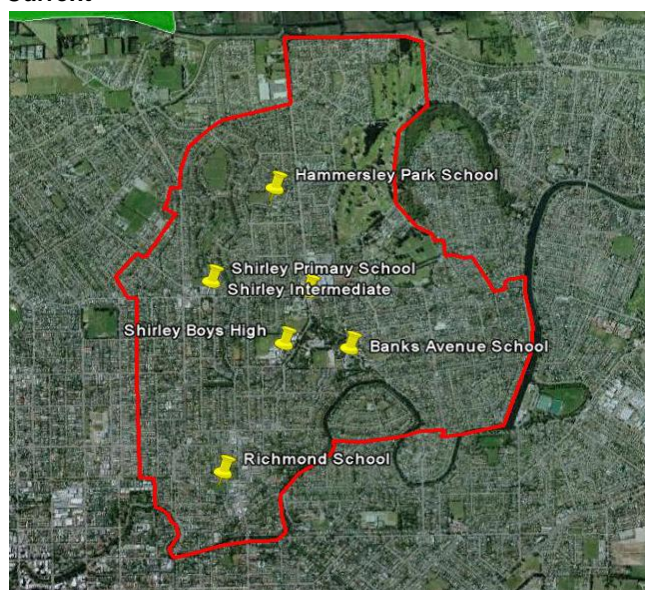
Access	Equity	Education and governance	Infrastructure
--------	--------	--------------------------	----------------

Network Summary: The Shirley cluster has a number of schools that experienced building and land damage. There is a small school population located in a low socio-economic area to the south of the cluster. The cluster is bordered by the 'red-zone' to the south and south-east, but has strong connections to the rest of the Christchurch network to the west.

School by School Information:

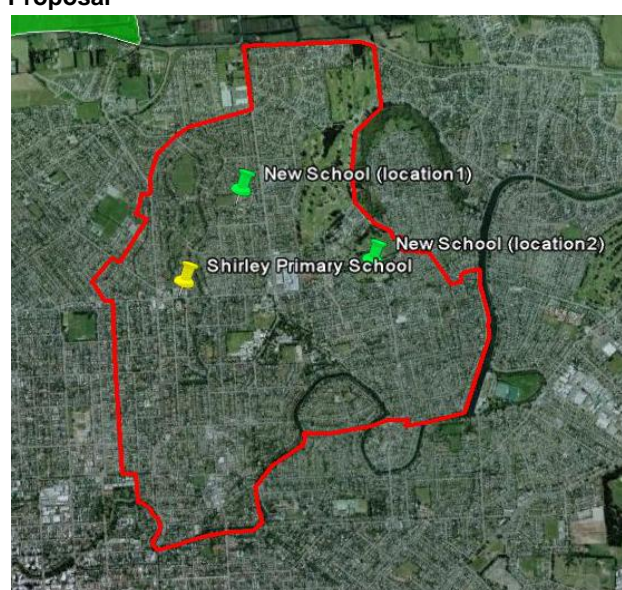
School	March 2012 Roll	Out of Zone Learners	Site Size	Investment	Utilisation	ERO Cycle	Unengaged learners	NCEA Level 2 Achievement
Banks Ave	387	216	2.7 ha		80%	3yrs	14	n/a
Hammersley Park	49	0	3.9 ha		18%	2yrs	9	n/a
Richmond	38	0	1.6 ha		27%	2yrs	0	n/a
Shirley Boys High School	1272	951	10.9 ha		100%	3yrs	77	65%
Shirley Intermediate	222	0	4 ha		67%	3yrs	36	n/a
Shirley School	230	120	2.1 ha		88%	3yrs	4	n/a

Current



Location of State Schools in Indicative Cluster Boundary

Proposal



Location of State Schools in Indicative Cluster Boundary

Proposal

Access	Equity	Education and governance	Infrastructure
--------	--------	--------------------------	----------------

School	Land & Infrastructure	Entity
Banks Ave	Full primary (Yr1-8)	Close site
Hammersley Park		Close site
Richmond		Close site
Shirley Intermediate		Close site
Shirley School	Full primary (Yr1-8)	Repair
		Re-capitate Relocate to new site.
		Close
		Close
		Close
		Re-capitate

Note: Waiting for completed geotechnical information

- Ferndale School has satellite provision at Hammersley Park School.
- Refer to Secondary Cluster for Shirley Boys High School information
- Refer to Special Education Learning Community Cluster for more information.
- Refer to Special Education Learning Community Cluster for proposed special school satellite provision

SPECIAL SCHOOLS Learning Community Cluster

Category - Consolidate

Catalyst for Change: Land / Building / People

Access	Equity	Education and governance	Infrastructure
--------	--------	--------------------------	----------------

Network Summary: Special Schools provide an option of specialist teaching for high and very high needs learners. These schools form part of a network of provision across greater Christchurch.

School by School Information:

School	March 2012 Roll	Out of Zone Learners	Site Size	Investment	Utilisation	ERO Cycle	Unengaged learners
Allenvale	127	n/a	0.6 ha		n/a	3	1
Ferndale	96	n/a	0.5 ha		n/a	3	7
Halswell Residential *	32	n/a	6.1 ha		n/a	3	6
McKenzie Residential *	24	n/a	2.8 ha		n/a	3	0
Southern Regional Health *	0	n/a	n/a		n/a	3	0
Van Asch Deaf Education Centre *	20	n/a	7.9 ha		n/a	3	6
Waitaha	30	n/a	0.8 ha		n/a	3	0

* Regional and national schools are not part of the proposal

Notes on Current provision

Satellite classrooms of special schools are part of the special education network provision across greater Christchurch. It is recognised that the current positioning of the following satellites will not fit with future Special Education network planning and will therefore need to be relocated:

- Allenvale Special School & Resource Centre Satellite @ Westburn School in the Avonhead Learning Community Cluster
- Ferndale School Satellite @ Bromley School in the Linwood Learning Community Cluster
- Ferndale School Satellite @ Glenmoor School in the Mairehau Learning Community Cluster
- Ferndale School Satellite @ Northcote School in the Papanui Learning Community Cluster
- Ferndale School Satellite @ Wairakei School in the Roydvale Learning Community Cluster
- Ferndale School Satellite @ Hammersley Park School in the Shirley Learning Community Cluster
- Ferndale School Satellite @ Beckenham School in the Central City Learning Community Cluster

The following satellite provisions will remain:

- Van Asch Deaf Education Centre Satellite @ Hagley Community College in the Central City Learning Community Cluster
- Van Asch Deaf Education Centre Satellite @ Wharenu School in the Riccarton Learning Community Cluster

In addition

- Blind and Low Vision Education Network New Zealand (BLENNZ) is also included within the special education network provision. BLENNZ has a Visual Resource Centre on site at Elmwood Normal School

Proposal

Access	Equity	Education and governance	Infrastructure
--------	--------	--------------------------	----------------

	Land & Infrastructure	Entity
Allenvale Special School & Resource Centre	Relocate	Establish an Allenvale Special School & Resource Centre network in northern Christchurch and Waimakariri
Ferndale School	Relocate	Establish a Ferndale School network in central and eastern Christchurch
Waitaha School	Relocate	Establish a Waitaha School network in West Christchurch and across the Selwyn area

Proposed Detailed Network

Base School	Satellite Provision
Allenvale Special School & Resource Centre base @ a. Kaiapoi Cluster	Satellites @ b. Rangiora Cluster c. Roydvale Cluster d. Additional secondary option to be considered if required
Ferndale base @ a. Linwood Cluster or b. Aranui Cluster	Satellites @ a. Shirley or Parklands Cluster b. Aranui or Linwood Cluster c. Additional secondary option to be considered if required
Waitaha base @ a. Rolleston Cluster or b. Hornby Cluster	Satellites @ a. Rolleston Cluster b. Hornby Cluster c. Additional secondary option to be considered if required

Note: Base schools to be sited at secondary schools

Notes on Proposal

- Special Schools can become hubs of expertise, co-located with mainstream schools, and responsible for working with clusters of schools. Establishment of satellite classrooms integrated into mainstream schools will increase provision across greater Christchurch for learners with significant special education needs.
- To progress this, a geographical review of the greater Christchurch area into 3 areas is proposed. These areas would relate to each of the special schools, as defined by demographics. The service focus area for Ferndale School is the central and eastern city; Allenvale School is the northern part of the city and Waimakariri, and Waitaha School is to the west and across the Selwyn area.
- Not all Special Schools have developed satellite facilities, however given the rebuild opportunity in Christchurch satellite provisions can be established in a geographically logical manner across the city, and within each of the three geographic areas proposed above.
- Newly positioned satellites would be managed from strategically sited special school bases or 'hubs' (3) ideally, but not necessarily, co-located with secondary schools/education campus settings.
- The proposals for location of each of the base schools and their satellite provisions has considered where population growth is expected.
- It is proposed that each Special School have satellite classrooms integrated into community based schools in those identified geographic areas.
- In addition to the day Special Schools, the accommodation needs of the Regional Sensory providers: VADEC and BLENNZ, are also being considered within the rebuild/renewal options for greater Christchurch.

ST ALBANS Learning Community Cluster

Category – Restore

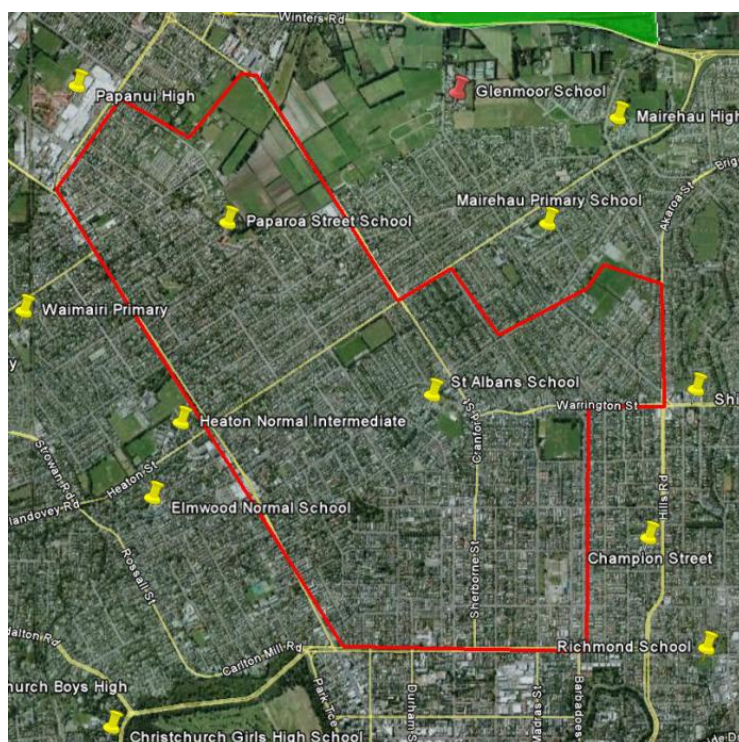
Catalyst for Change: N/A

Access	Equity	Education and governance	Infrastructure
--------	--------	--------------------------	----------------

School by School Information:

School	March 2012 Roll	Out of Zone Learners	Site Size	Investment	Utilisation	ERO Cycle	Unengaged learners
Paparoa Street	489	91	2.4 ha		96%	3yrs	0
St Albans	454	16	2 ha		86%	3yrs	0

Current



Location of State Schools in Indicative Cluster Boundary

Proposal

Access	Equity	Education and governance	Infrastructure
--------	--------	--------------------------	----------------

School		Land & Infrastructure	Entity
Paparoa Street	Contributing (Yr1-6)	Repair	Continues
St Albans	Contributing (Yr1-6)	Repair	Continues

ST MARTINS Learning Community Cluster

Category – Restore

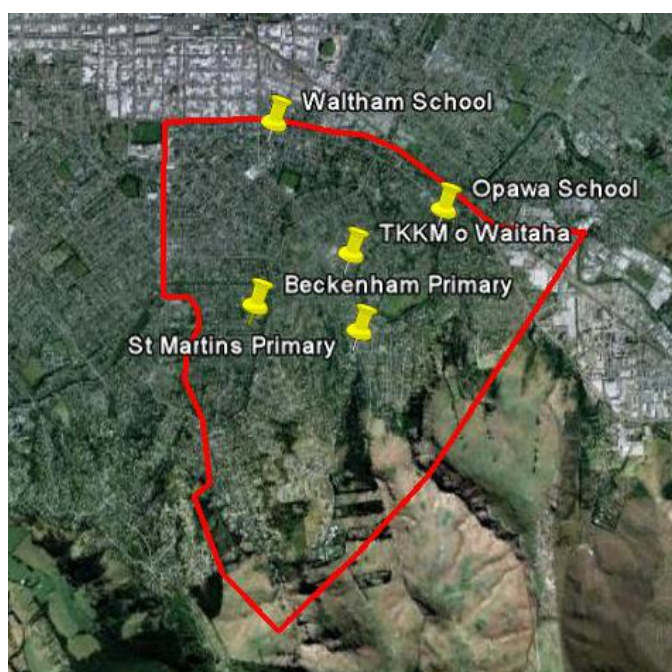
Catalyst for Change: N/A

Access	Equity	Education and governance	Infrastructure
--------	--------	--------------------------	----------------

School by School Information:

School	March 2012 Roll	Out of Zone Learners	Site Size	Investment	Utilisation	ERO Cycle	Unengaged learners	NCEA Level 2 Achievement
Beckenham	409	81	1.3 ha		96%	3yrs	2	n/a
Opawa	358	95	2.4 ha		85%	3yrs	1	n/a
St Martin's	442	57	1.5 ha		80%	3yrs	12	n/a
TKKM o Waitaha	78	0	2.0 ha		56%	3yrs	7	67%
Waltham	121	0	1.4 ha		83%	3yrs	4	n/a

Current



Location of State Schools in Indicative Cluster Boundary

Note

- Ferndale School has satellite provision at Beckenham School.
- Refer to Special Education Learning Community Cluster for more information.
- Refer to Maori Medium Cluster for TKKM o Waitaha information.

Proposal

Access	Equity	Education and governance	Infrastructure
--------	--------	--------------------------	----------------

School		Land & Infrastructure	Entity
Beckenham	Full primary (Yr1-8)	Repair	Continues
Opawa	Full primary (Yr1-8)	Repair	Continues
St Martins	Full primary (Yr1-8)	Repair	Continues
Waltham	Full primary (Yr1-8)	Repair	Continues

TAI TAPU Learning Community Cluster

Category - Restore

Catalyst for Change: N/A

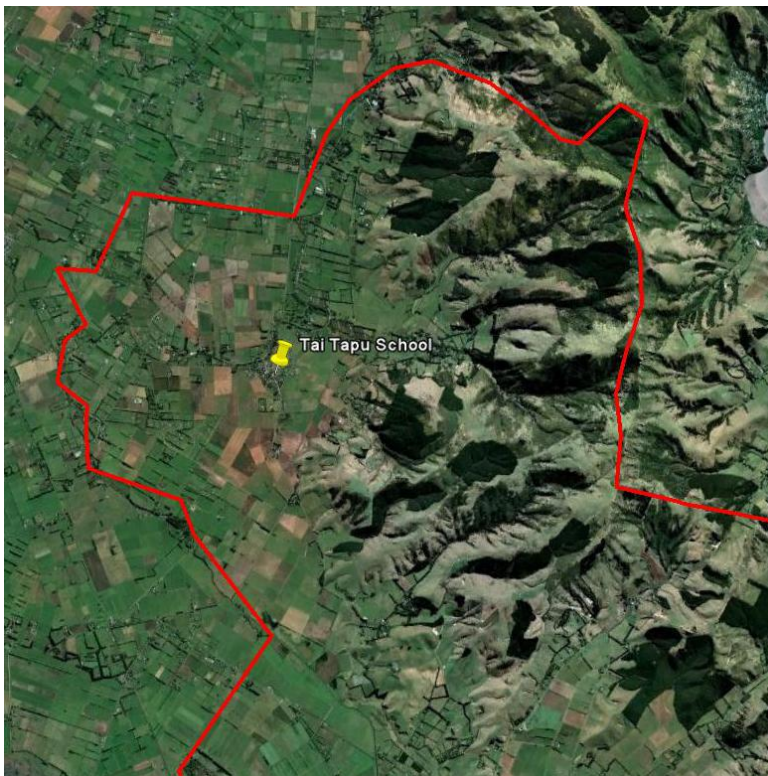
Access	Equity	Education and governance	Infrastructure
--------	--------	--------------------------	----------------

Network Summary:

School by School Information:

School	March 2012 Roll	Out of Zone Learners	Site Size	Investment	Utilisation	ERO Cycle	Unengaged learners
Tai Tapu	264	35	4.6 ha		107%	3	0

Current



Location of State Schools in Indicative Cluster Boundary

Proposal

Access	Equity	Education and governance	Infrastructure
--------	--------	--------------------------	----------------

School	Land & Infrastructure	Entity
Tai Tapu	Full primary (Yr1-8)	Repairs
		Continues

Note: Of the 215 schools in Canterbury approximately 40% outside the greater Christchurch environs (e.g. Ashburton, Darfield, Burnham) had relatively minor earthquake damage which has subsequently been repaired. Therefore there is no costing information against these schools.

UPPER RICCARTON Learning Community Cluster

Category – Restore

Catalyst for Change: N/A

Access	Equity	Education and governance	Infrastructure
--------	--------	--------------------------	----------------

School by School Information:

School	March 2012 Roll	Out of Zone Learners	Site Size	Investment	Utilisation	ERO Cycle	Unengaged learners	NCEA Level 2 Achievement
Riccarton	179	0	2.4 ha		59%	4-5yrs	3	n/a
Riccarton High	916	214	9.9 ha		98%	3yrs	36	74%

Current



Location of State Schools in Indicative Cluster Boundary

Note:

- Refer to Secondary Cluster for Riccarton High School information

Proposal

Access	Equity	Education and governance	Infrastructure
--------	--------	--------------------------	----------------

School	Land & Infrastructure	Entity
Riccarton	Full primary (Yr1-8)	Repair
		Continues

WAIMAKARIRI NORTH Learning Community Cluster

Category - **Restore**

Catalyst for Change: **N/A**

Access	Equity	Education and governance	Infrastructure
--------	--------	--------------------------	----------------

Network Summary:

School by School Information:

School	March 2012 Roll	Out of Zone Learners	Site Size	Investment	Utilisation	ERO Cycle	Unengaged learners
Ashley	153	0	1.7 ha		99%	2	0
Loburn	167	0	1.5 ha		100%	3	0
North Loburn	109	6	3.4 ha		97%	2	0
Sefton	90	0	1.5 ha		74%	3	0

Current



Location of State Schools in Indicative Cluster Boundary

Proposal

Access	Equity	Education and governance	Infrastructure
--------	--------	--------------------------	----------------

School		Land & Infrastructure	Entity
Ashley	Full primary (Yr1-8)	Repair	Continues
Loburn	Full primary (Yr1-8)	Repair	Continues
North Loburn	Full primary (Yr1-8)	Repair	Continues
Sefton	Full primary (Yr1-8)	Repair	Continues

Note: Of the 215 schools in Canterbury approximately 40% outside the greater Christchurch environs (e.g. Ashburton, Darfield, Burnham) had relatively minor earthquake damage which has subsequently been repaired. Therefore there is no costing information against these schools.

WAIMAKARIRI RURAL Learning Community Cluster

Category - **Restore**

Catalyst for Change: **N/A**

Access	Equity	Education and governance	Infrastructure
--------	--------	--------------------------	----------------

Network Summary:

School by School Information:

School	March 2012 Roll	Out of Zone Learners	Site Size	Investment	Utilisation	ERO Cycle	Unengaged learners
Clarkville	197	30	1.5 ha		96%	4-5	1
Fernside	232	24	4.0 ha		109%	3	0
Ohoka	245	26	3.2 ha		102%	3	0
Swannanoa	235	0	5.8 ha		91%	2	0

Current



Location of State Schools in Indicative Cluster Boundary

Proposal

Access	Equity	Education and governance	Infrastructure
--------	--------	--------------------------	----------------

School		Land & Infrastructure	Entity
Clarkville	Full primary (Yr1-8)	Repair	Continues
Fernside	Full primary (Yr1-8)	Repair	Continues
Ohoka	Full primary (Yr1-8)	Repair	Continues
Swannanoa	Full primary (Yr1-8)	Repair	Continues

Note: Of the 215 schools in Canterbury approximately 40% outside the greater Christchurch environs (e.g. Ashburton, Darfield, Burnham) had relatively minor earthquake damage which has subsequently been repaired. Therefore there is no costing information against these schools.

WAIMAKARIRI SECONDARY Learning Community Cluster

Category - Restore

Catalyst for Change: N/A

Access	Equity	Education and governance	Infrastructure
--------	--------	--------------------------	----------------

Network Summary:

School by School Information:

School	March 2012 Roll	Out of Zone Learners	Site Size	Investment	Utilisation	ERO Cycle	Unengaged learners	NCEA level 2 Achievement
Kaiapoi High	632	8	8.8 ha		83%	3	21	61%
Oxford Area	517	0	4.2 ha		107%	3	26	69%
Rangiora High	1796	44	2.9 ha		102%	2	23	70%

Current



Location of State Schools in Indicative Cluster Boundary

Proposal

Access	Equity	Education and governance	Infrastructure
--------	--------	--------------------------	----------------

School		Land & Infrastructure	Entity
Kaiapoi High	Secondary (Yr9-15)	Repair	Continues
Oxford Area	Composite (Yr1-15)	Repair	Continues
Rangiora High	Secondary (Yr9-15)	Repair	Continues

Note:

- Oxford Area School March 2012 roll includes year 1-8 students.

Of the 215 schools in Canterbury approximately 40% outside the greater Christchurch environs (e.g. Ashburton, Darfield, Burnham) had relatively minor earthquake damage which has subsequently been repaired. Therefore there is no costing information against these schools.

WOODEND/PEGASUS Learning Community Cluster

Category - **Consolidate**

Catalyst for Change: Buildings / Land / People

Access	Equity	Education and governance	Infrastructure
--------	--------	--------------------------	----------------

Network Summary:

School by School Information:

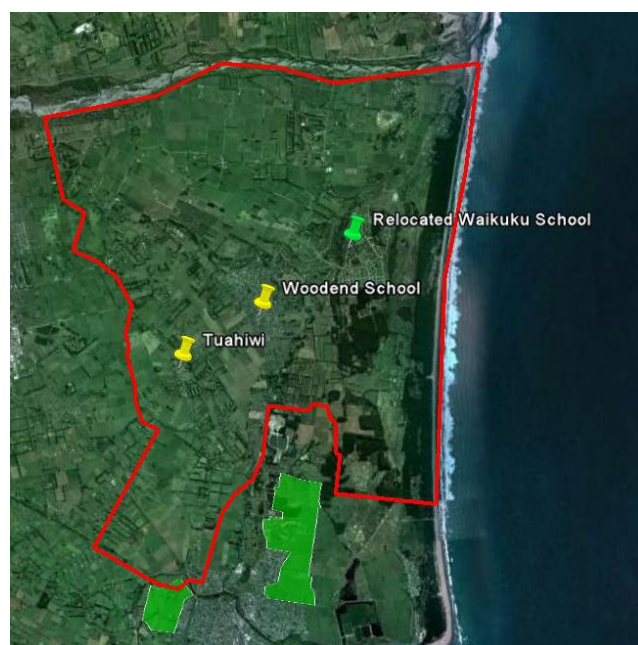
School	March 2012 Roll	Out of Zone Learners	Site Size	Investment	Utilisation	ERO Cycle	Unengaged learners
Tuahiwi	127	0	1.6 ha		101%	3	1
Waikuku	138	0	1.3 ha		63%	3	1
Woodend	301	12	1.5 ha		88%	3	1

Current



Location of State Schools in Indicative Cluster Boundary

Proposal



Location of State Schools in Indicative Cluster Boundary

Proposal

Access	Equity	Education and governance	Infrastructure
--------	--------	--------------------------	----------------

School		Land & Infrastructure	Entity
Tuahiwi	Full primary (Yr1-8)	Repair	Continues
Waikuku	Full primary (Yr1-8)	Relocate	Continues
Wooded	Full primary (Yr1-8)	Repair	Continues

Note: Of the 215 schools in Canterbury approximately 40% outside the greater Christchurch environs (e.g. Ashburton, Darfield, Burnham) had relatively minor earthquake damage which has subsequently been repaired. Therefore there is no costing information against these schools.

WOOLSTON Learning Community Cluster

Category – Rejuvenate

Catalyst for Change: Land / Building / **People**

Access	Equity	Education and governance	Infrastructure
--------	--------	--------------------------	----------------

School by School Information:

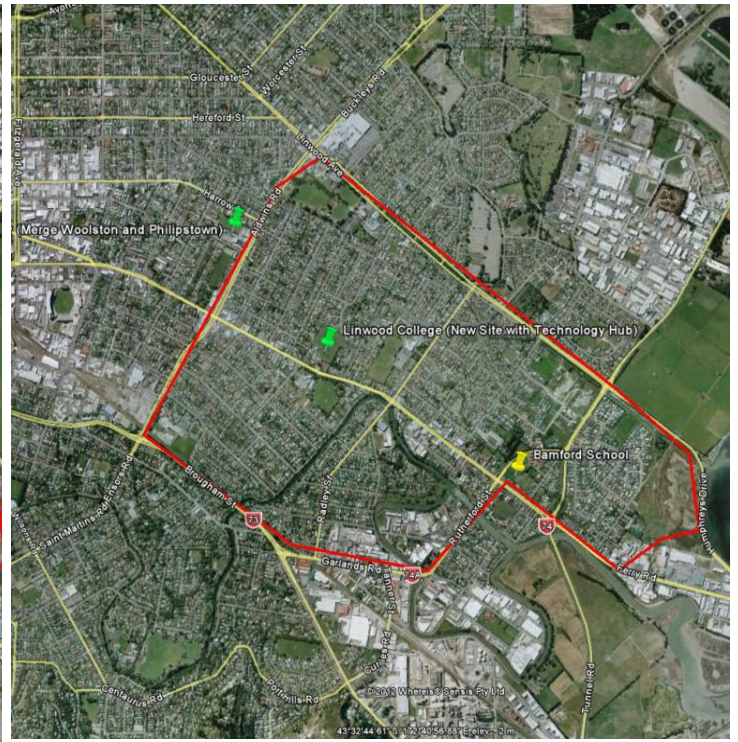
School	March 2012 Roll	Out of Zone Learners	Site Size	Investment	Utilisation	ERO Cycle	Unengaged learners
Woolston	220	0	1.5 ha		103%	3yrs	4
Bamford	79	0	2 ha		52%	3yrs	10

Current



Location of State Schools in Indicative Cluster Boundary

Proposal



Location of State Schools in Indicative Cluster Boundary

Proposal

Access	Equity	Education and governance	Infrastructure
--------	--------	--------------------------	----------------

School	Land & Infrastructure	Entity
Woolston	Close site	Merge with Phillipstown on current Linwood College site
Bamford	Repair	Continues

Note:

- See Linwood learning community cluster for more information on Woolston School

Legend for Network Summary

Criteria	Measure			
Access	Distance to closest school. Capacity to meet demands on projected rolls.	Age 5-9yrs <3.2km to nearest school	Age 5-9yrs >3.2km to nearest school but within 2.4km of bus route.	Age 5-9yrs >3.2km to nearest school and no bus route.
		Age 10+yrs <4.8km to nearest school	Age 10+yrs <4.8km to nearest school but within 2.4km of bus route.	Age 10+yrs <4.8km to nearest school and no bus route.
Equity	Education diversity (technology and Maori Medium Education (MME)) measured at a cluster level.	Technology and MME are available in the cluster.	Either technology or MME is available in the cluster, with the other offering in a neighbouring cluster. Or, Both technology and MME are located in a neighbouring cluster.	Either MME and/or technology are not available in the cluster or in a neighbouring cluster.
Education and Governance	Student performance, engagement and length between ERO review cycles.	Student Engagement (Standowns & Suspensions) <2 per 100 students AND, ERO Cycle 3yrs plus AND (if secondary) NCEA Level 2 >85%	Student Engagement (Standowns & Suspensions) >2 per 100 students OR, ERO Cycle 2yr review cycle OR, NCEA Level 2 (if secondary) 70 – 85%	Student Engagement (Standowns & Suspensions) >2 per 100 students AND, ERO Cycle 2yr review cycle OR, NCEA Level 2 (if secondary) <70%
Infrastructure	Roll size. (area schools – the roll measure used is the same as intermediate)	Roll PS>250 Int>600 SS>1000	Roll 150<PS<250 450<PS<600 650<SS<10000	Roll PS<150 Int<450 SS<650
	Percentage utilisation.	Utilisation 85 – 95%	Utilisation 65 – 85% or 95 – 100%	Utilisation <65% or >100%
	Scalability and flexibility (Site Area).	Site Area >2.5 ha	Site Area 2 – 2.5 ha	Site Area <2 ha or unsuitable for rebuild

Legend for Investment

Criteria	Measure			
Investment	Total projected cost (maintenance and capital) over the next 10 yrs.	<\$10,000 per student	\$10,000 to \$20,000 per student	>\$20,000 per student

- Of the 215 schools in Canterbury approximately 40% outside the greater Christchurch environs (e.g. Ashburton, Darfield, Burnham) had relatively minor earthquake damage which has subsequently been repaired. Therefore there is no costing information against these schools.

- The detailed costing information for schools within greater Christchurch (which includes Christchurch, Kaiapoi, Rolleston) was derived from physical condition assessment inspections by engineers and project managers, survey data from the recent weathertightness national survey, and earthquake strengthening estimates.

In determining the above criteria it is recognised that there is a substantial volume of data available which can be assessed. The above criteria were determined as providing a robust snap shot of the condition of the network.

Source of Data

Roll: March 2012 roll return.

Out of zone learners: March 2012 roll return.

Site Size: Ministry, Property Management Information System (PMIS).

Utilisation: The amount of student space being used (peak roll) as a percentage of the total student spaces available. Total student space has been based on the number of classrooms as at February 2012.

Peak rolls used: Primary – the October 2011 roll

Secondary and intermediate - the March 2012 roll return.

ERO Cycle: As at May 2012 the time the Education Review Office (ERO) is likely to review the school again (based on the ERO website).

Unengaged Learners: Standowns & Suspensions, data is live so is provisional and subject to change. Data was extracted May 2012 and is the 2011 calendar year data. Sourced from the Ministry of Education database.

NCEA Level 2: Proportion of leavers who attained NCEA Level 2 or a higher attainment.

Data sources: Ministry of Education school leaver collection.

Ministry of Education database of New Zealand Qualifications Authority (NZQA) NCEA results.

Data frequency: Yearly in September and June respectively.

Notes: 2011 data is provisional. The NCEA candidate data includes Year 12 NCEA Candidates. A candidate is a student who has achieved at least one NCEA credit at any level in a given year.

International students and students with gender unknown are excluded from the overall data and data by gender.

Definitions of Terms used in Proposal

School – Institution type.

Land & Infrastructure – the land and the buildings.

Repair for: **Restore** – Remediating the buildings to accommodate changes to the schools, because of earthquake damage, structural strengthening, weather tightness issues and the maintenance required over the next 10 years. Sharing services/ facilities and innovation amongst the Learning Community Cluster must be considered and implemented where possible.

Consolidate and Rejuvenate – Remediating the buildings and land to accommodate the innovative changes to the schools, due to demographic change, earthquake damage, structural strengthening, weather tightness issues and the maintenance required over the next 10 years.

Close site – the current physical site to be closed.

Relocate – the current physical site to be closed and a new site developed to accommodate the relocated school. As per Ministry policy.

New – New school site and buildings.

Entity – The schools legal status.

Continues – The current school entity continues.

Close – the school entity ceases to exist.

Merge – When two or more schools merge, one is identified as the continuing school, while the other(s) is/are closed.

Re-capitate – A change to a school from a Contributing (years 1 - 6) to a Full Primary (years 1 – 8).

De-capitate – A change to a school from a Full Primary (years 1 – 8) to a Contributing (years 1 - 6).

New – New school established.